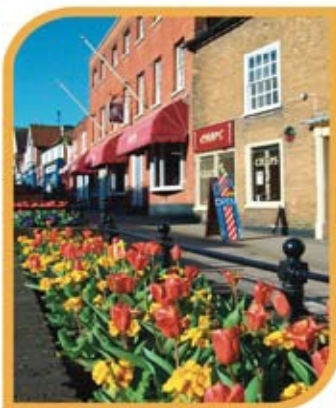


Key Facts - 2 - Ward Profiles

Passingford

January 2010



Ward Profile: Passingford

Foreword

One Epping Forest is the Local Strategic Partnership for our district. It brings together representatives from important local public services, business and people, providing invaluable support to our local communities through the voluntary sector. One Epping Forest exists so that we can all work better together to improve the economic, social and environmental well-being of the people and communities that make up the Epping Forest District. We want to make Epping Forest a great place to live, work, study and do business. In order to achieve this, it is essential that all our partners bring together the information and intelligence that tells us how our District is at the moment, and identifies the factors driving and sustaining change locally.

The Ward Profiles (Key Facts 2) bring together useful data at a local level and have been prepared by Forward Planning Officers at Epping Forest District Council, supported by the Local Strategic Partnership. They will sit underneath the over-arching District Profile 'Shaping the Future' (Key Facts 1), which is available via One Epping Forest at www.oneeppingforest.org.uk, or Epping Forest District Council.

The Ward Profiles are intended to provide a data 'snapshot' of the Wards within the District. This information will help the Local Strategic Partnership to identify trends and issues within the District, which will inform the preparation of the new Sustainable Community Strategy.

We welcome feedback from partners about the contents and presentation of data. If you have any suggestions please contact Sarah King at Epping Forest District Council by emailing sking@eppingforestdc.gov.uk or by telephone on 01992 564347.

We hope you find this document helpful.

Forward Planning

Epping Forest District Council

Ward Profile: Passingford

Contents

Section	Page
Foreword	2
Table of contents	3
About the Ward	4
Public perception of the local area	5
Basic information: Location within the District	6
Basic information: Area	7
Population	8
Ethnicity	9
Health	10
Deprivation	12
Housing	13
Employment	14
Transport	16
Crime and anti-social behaviour	17
Sources and further reading	18

Ward Profile: Passingford

About the Ward

The ward of Passingford lies in the south east of the Epping Forest District, and borders the neighbouring wards of North Weald Bassett, Chipping Ongar, Greensted & Marden Ash, Moreton & Fyfield, Epping Lindsey & Thornwood Common, Epping Hemnall, Theydon Bois and Lambourne.

Passingford ward incorporates the following settlements: Toot Hill, Theydon Mount, Theydon Garnon, Stapleford Tawney, Stapleford Abbots, and Stanford Rivers.

Passingford covers an area of 4795 hectares, and is comprised of 1 Lower Super Output Area (LSOA), as shown on page 7.

At the time of the 2001 National Census, Passingford had a population of 2094. According to Mid-2007 Ward Level Population Estimates (these are the most recent available from the Office for National Statistics) this figure now stands at 2194.

Ward Profile: Passingford

Public perception of the local area

The national Place Survey asks respondents about their views on their area. The most recent Place Survey was carried out towards the end of 2008. Central to the survey is the importance of capturing local people's views, experiences and perceptions, so that the solutions for an area can likewise reflect local views and preferences.

The Place Survey collects data over different areas, some are individual Wards, but some are amalgamations of Wards. The data below relates to the single ward of Passingford.

Please note that the percentage figures for some of the questions do not add up to 100%; this is because in some instances individuals could potentially be identified due to the smaller populations of some of the wards. Any such discrepancies are a consequence of Data Protection regulations.

In total 1350 completed questionnaires were returned, which, excluding 28 addresses that were not found, represents an adjusted response rate of 40.8%. On an observed statistic of 50%, a sample size of 1350 is subject to a maximum confidence interval of +/-2.67 at the 95% level of confidence.

Issues in the local area which are most in need of improvement:

1. Public Transport
2. Road and pavement repairs
3. Clean Streets
4. The level of crime
5. The level of traffic congestion AND Activities for teenagers

Overall, how satisfied or dissatisfied are you with your local area as a place to live?

Satisfied - 82%
Dissatisfied - 5%
Neutral - 13%
Not provided - 0%

How strongly do you feel you belong to your immediate neighbourhood?

Strongly - 65%
Not strongly - 35%
Don't know - 0%
Not provided - 0%

How safe or unsafe do you feel when outside in your local area after dark?

Safe - 70%
Unsafe - 18%
Neither - 11%
Don't know - 0%
Not provided - 1%

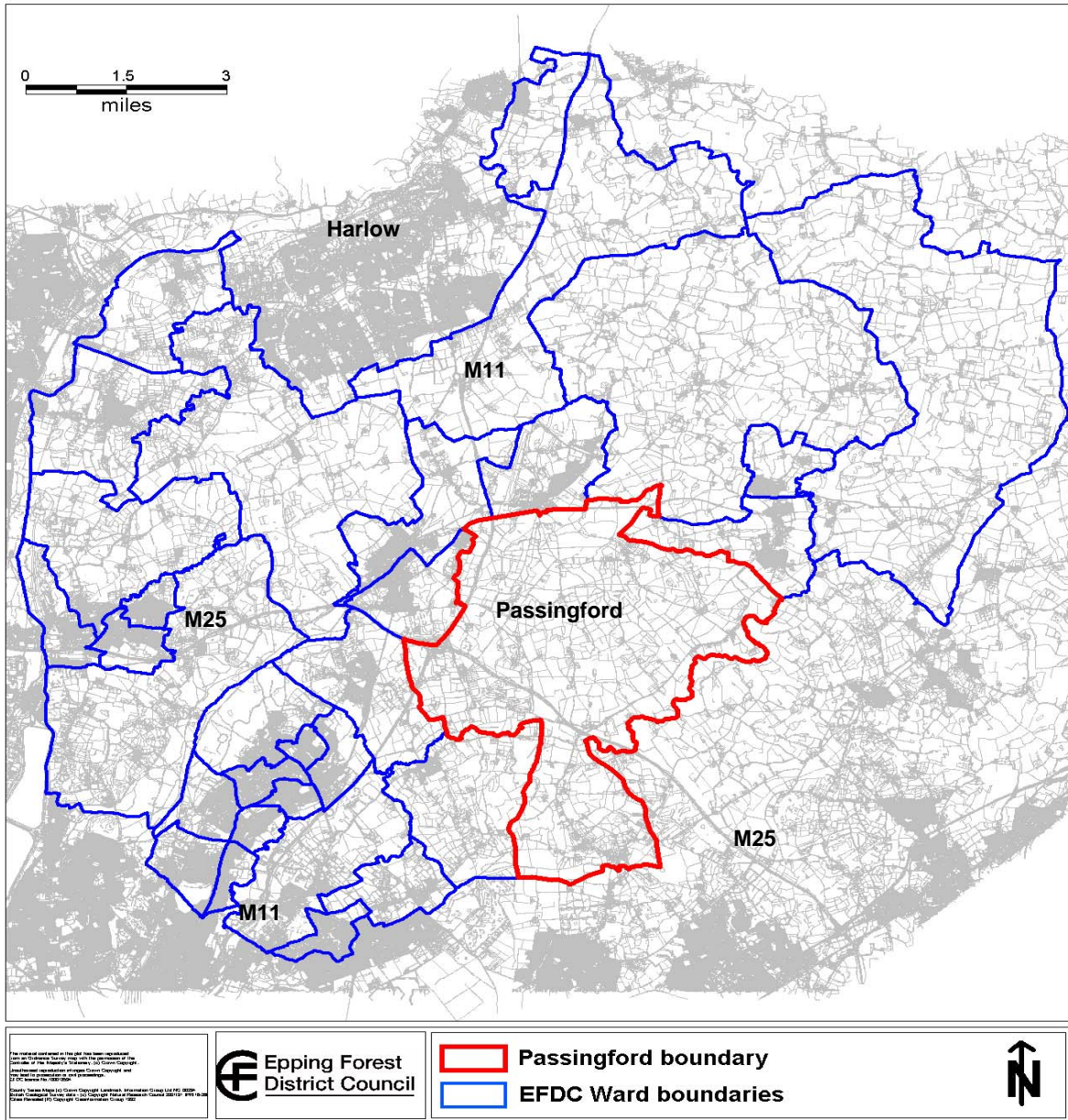
How safe or unsafe do you feel when outside in your local area during the day?

Safe - 93%
Unsafe - 5%
Neither - 0%
Don't know - 0%
Not provided - 3%

Source: Results taken from the 2008 Place Survey

Ward Profile: Passingford

Basic information: Location within the District



Ward Profile: Passingford

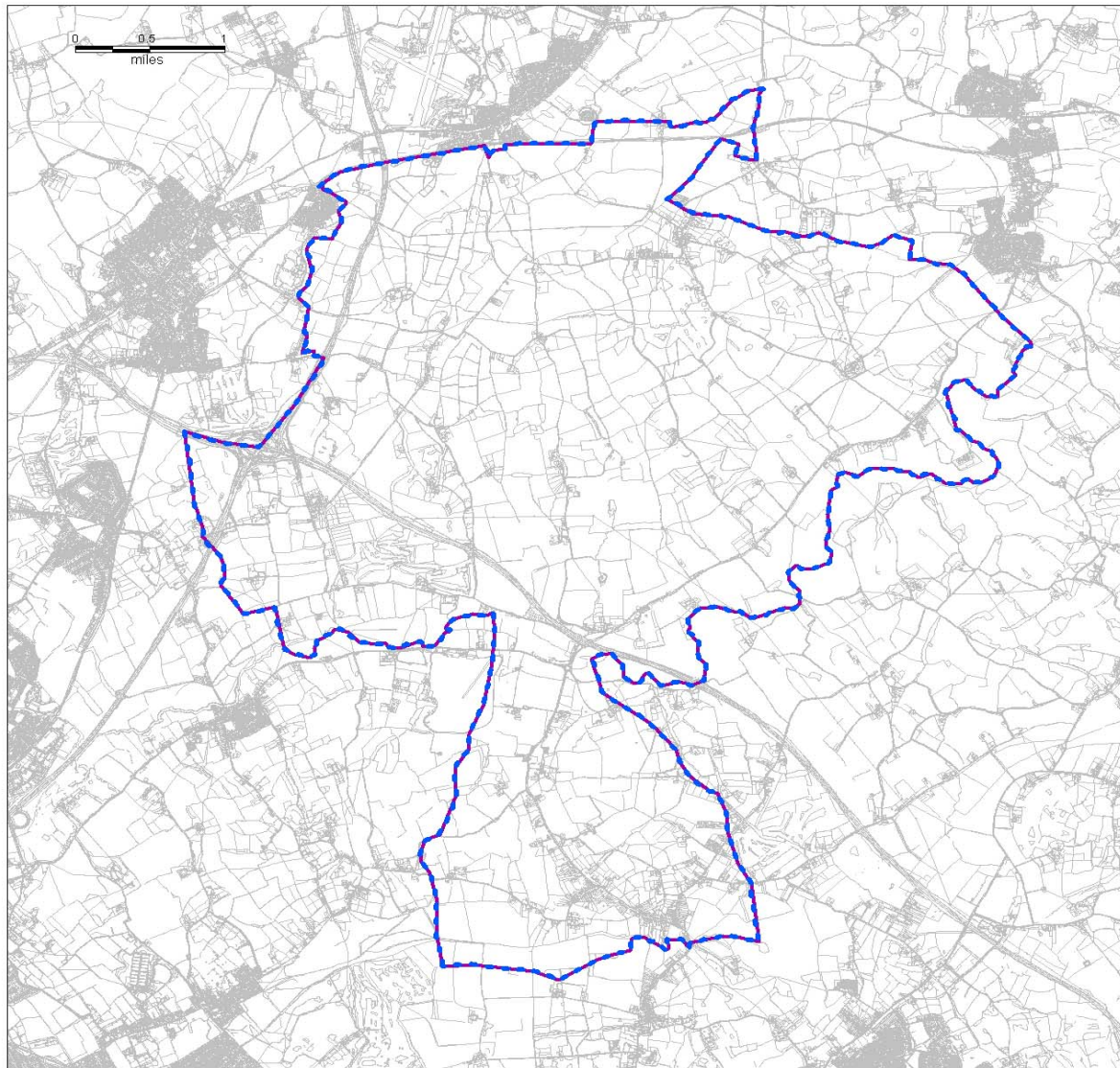
Basic information: Area

The ward of Passingford comprises one Lower Super Output Area (LSOA). LSOAs are small geographical areas, commonly used for data analysis by National Statistics. They have an average population of 1,500. Often, several LSOAs fit within the boundaries of one Ward. Sometimes the boundaries are slightly different however, as can be seen below.

LSOA	LSOA	Ward
Area (ha)	4796	4795

Source: EFDC mapping layers 2004

Ward and LSOA



The material contained in this profile has been reproduced from an Ordnance Survey map with the permission of the Controller of Her Majesty's Stationery Office. Copyright in the map data is the property of the Controller of Her Majesty's Stationery Office. No part of this publication may be reproduced or stored in a retrieval system without the prior written permission of the Controller of Her Majesty's Stationery Office.



LSOA boundaries
 Ward boundary



Ward Profile: Passingford

Population

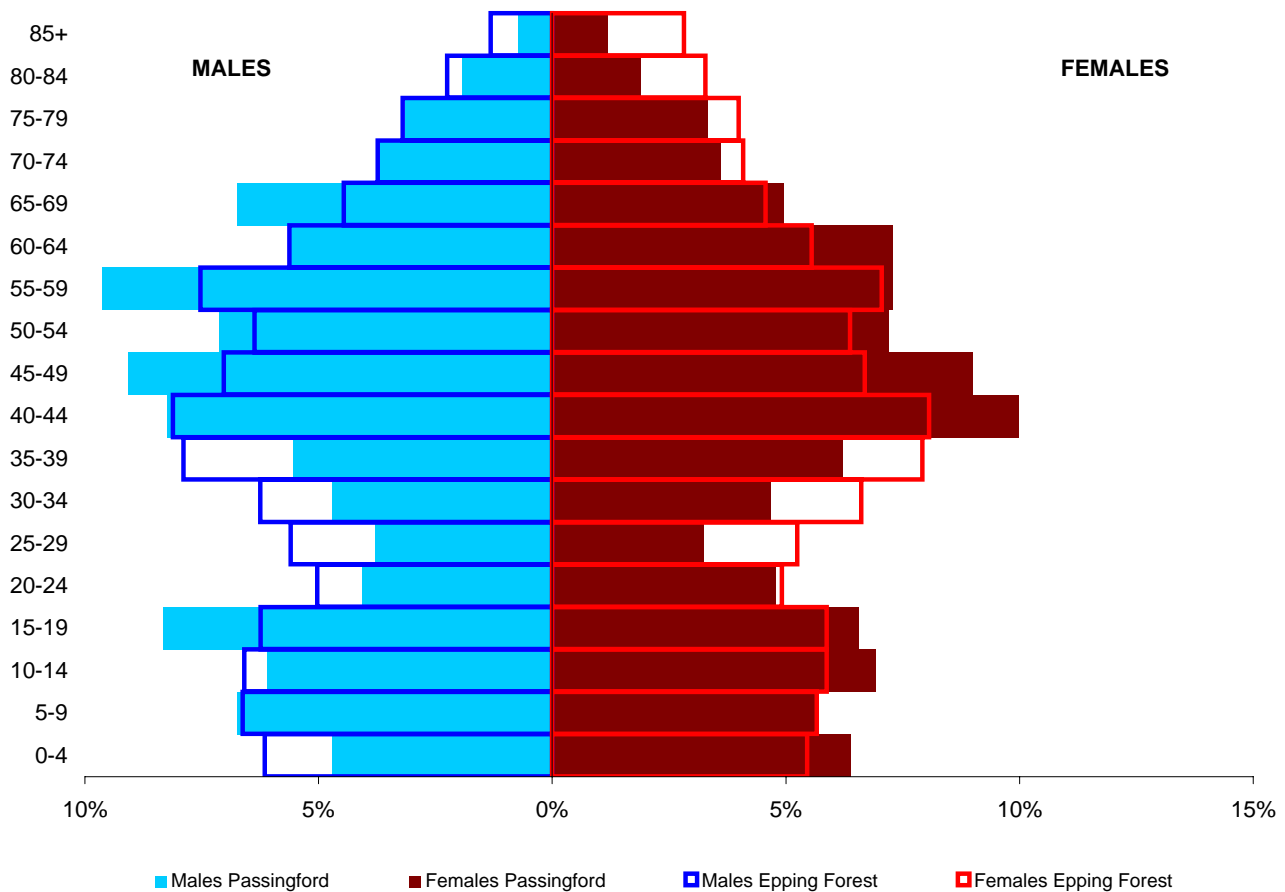
2001 National Census total 2094

Mid-2007 Ward Level Total Population Estimate: 2194

The following chart compares the distribution of various age groups in the population of the ward (solid bars), with the same age groups seen in the Epping Forest District (outline bars) as a whole. A single bar represents a single age group and the percentage of the population it represents is measured along the x-axis.

Such a comparison can be used to identify if a ward has an overall younger or older population than the district, but also more specifically, to see if there are any major generational differences in population. The data is split by gender.

Population Pyramid Comparison with Epping Forest District



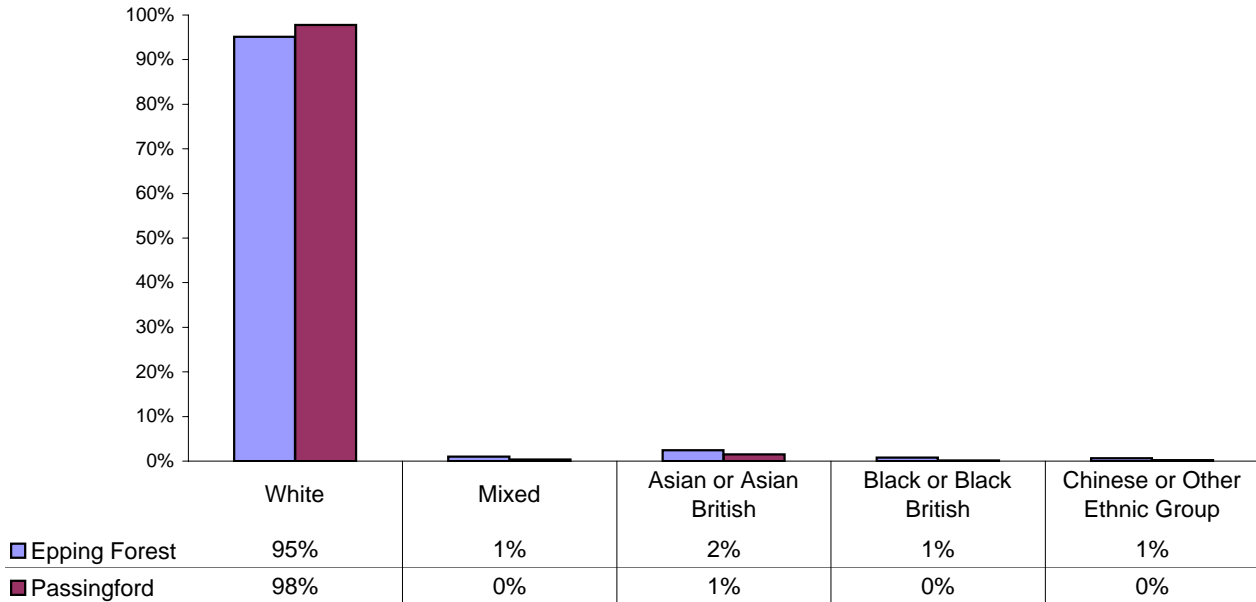
Source: Mid-2007 Ward Level Population Estimates - Office for National Statistics, 2009

Ward Profile: Passingford

Ethnicity

Ethnicity data shows the usual resident population's ethnic group and cultural background as perceived by the individual.

Ethnicity Comparison with Epping Forest District



Source: Office for National Statistics, 2001

The groups above incorporate the following, more detailed ethnicity classification groups (definitions from Neighbourhood Statistics):

'White' incorporates:

- White: British
- White: Irish
- White: Other White

'Black or Black British' incorporates:

- Black or Black British: Caribbean
- Black or Black British: African
- Black or Black British: Other Black

'Mixed' incorporates:

- Mixed: White and Black Caribbean
- Mixed: White and Black African
- Mixed: White and Asian
- Mixed: Other Mixed

'Chinese or Other Ethnic Group' incorporates:

- Chinese or Other Ethnic Group: Chinese
- Chinese or Other Ethnic Group: Other Ethnic Group

'Asian or Asian British' incorporates:

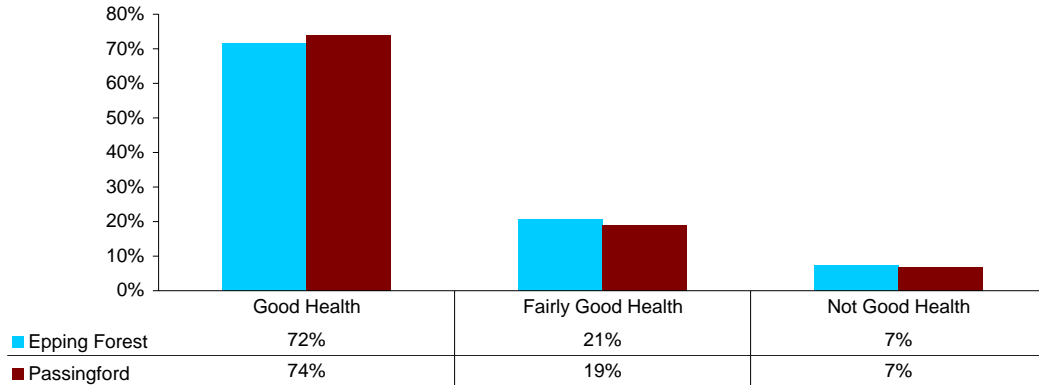
- Asian or Asian British: Indian
- Asian or Asian British: Pakistani
- Asian or Asian British: Bangladeshi
- Asian or Asian British: Other Asian

Ward Profile: Passingford

Health

General Health data shows the usual resident population, giving a self-assessment of their general health over the 12 months before the 2001 Census.

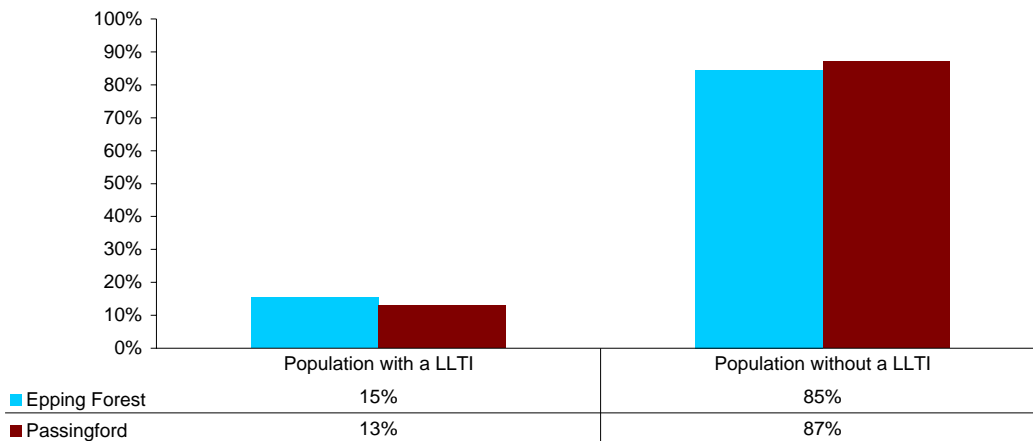
General Health (Self Description) Comparison with Epping Forest District



Source: Office for National Statistics, 2001

Limiting Long-term Illness data shows the usual resident population, giving a self-assessment of whether or not they had a limiting long-term illness, health problem or disability, which limited their daily activities or the work they can do, including problems that are due to old age.

Limiting Long-Term Illness Comparison with Epping Forest District



Source: Office for National Statistics, 2001

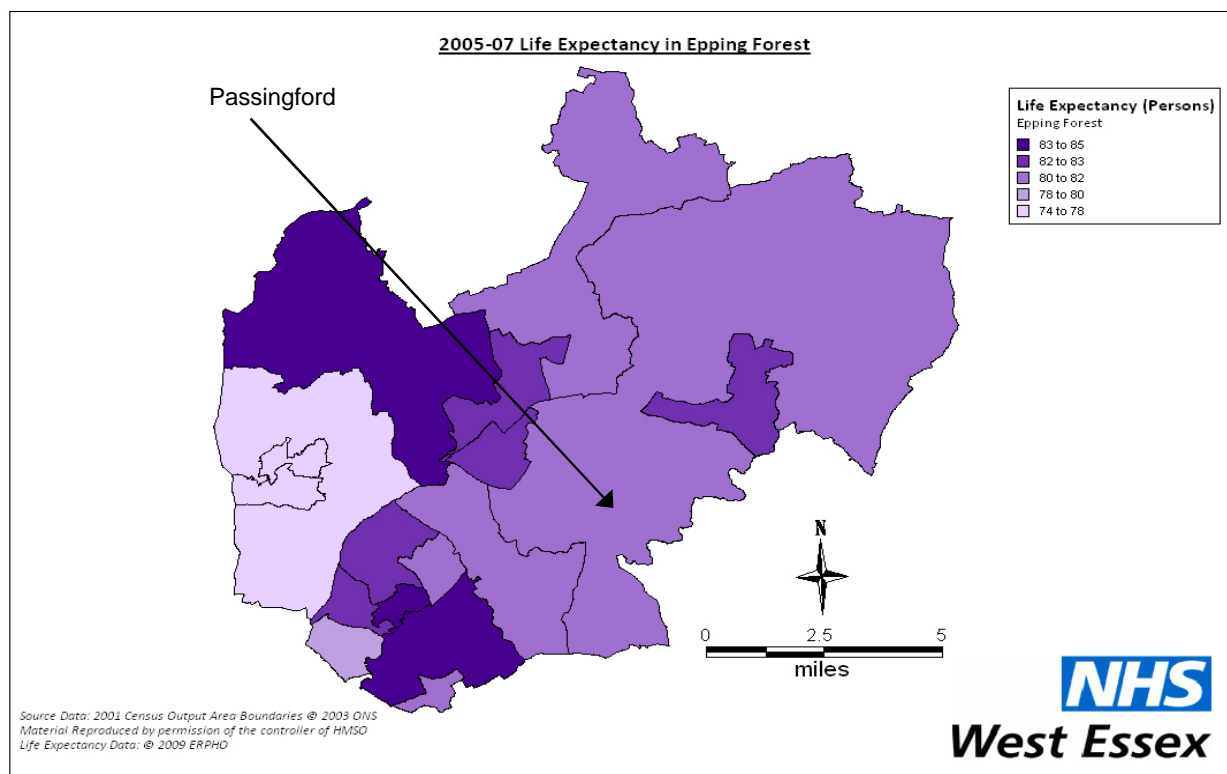
Ward Profile: Passingford

Health (continued)

Average Life Expectancy

The following map shows life expectancy (years) in the Epping Forest District by Middle Super Output Area (MSOA). The location of the ward is marked with an arrow for reference.

MSOAs are the next level up from LSOAs (explained on page 7). MSOAs are larger geographical areas, made up of LSOAs, and are commonly used for data analysis by National Statistics. They have an average population of 7,200.



Source: Eastern Region Public Health Observatory, 2009

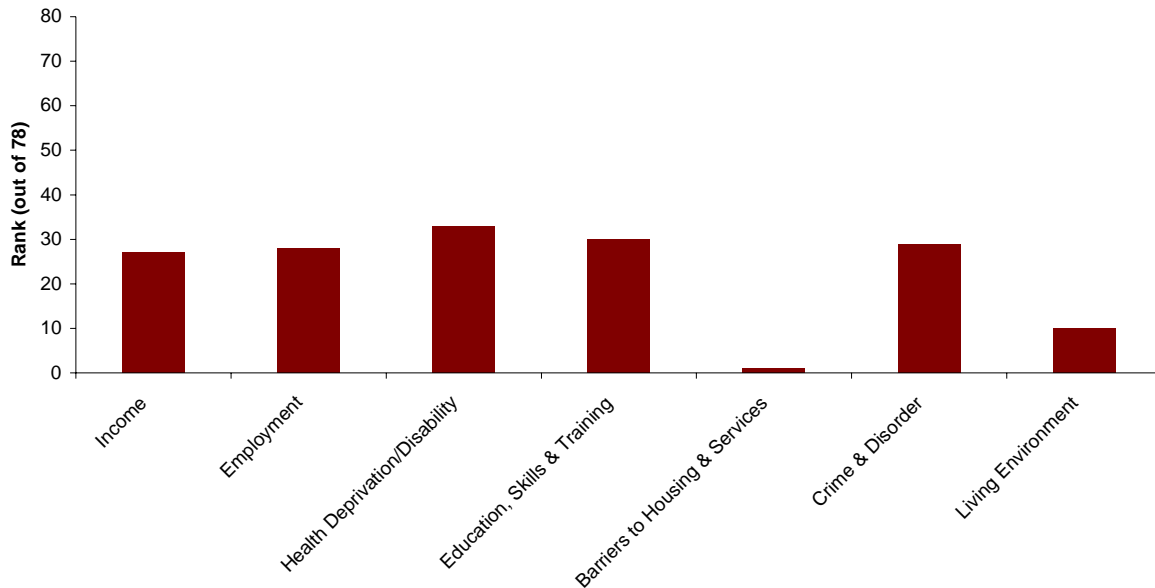
Ward Profile: Passingford

Deprivation

The 2007 Indices of Deprivation provide an overview of the level of deprivation, split between different areas e.g. employment, income, living environment, etc. The figures are calculated at Lower Super Output Area level, with each LSOA being assigned a rank out of 78 (total number of LSOAs in the Epping Forest District) for each area of deprivation.

A lower rank indicates a more deprived area. For example an LSOA with an income rank of 2 would be considered more deprived than an LSOA with an income rank of 25.

Deprivation Indices



NOTE: A LOWER RANK INDICATES A MORE DEPRIVED AREA

	Passingford LSOA
IMD national rank (out of 32482)	12010
IMD local rank (out of 78)	13
Income	27
Employment	28
Health Deprivation/Disability	33
Education, Skills & Training	30
Barriers to Housing & Services	1
Crime & Disorder	29
Living Environment	10

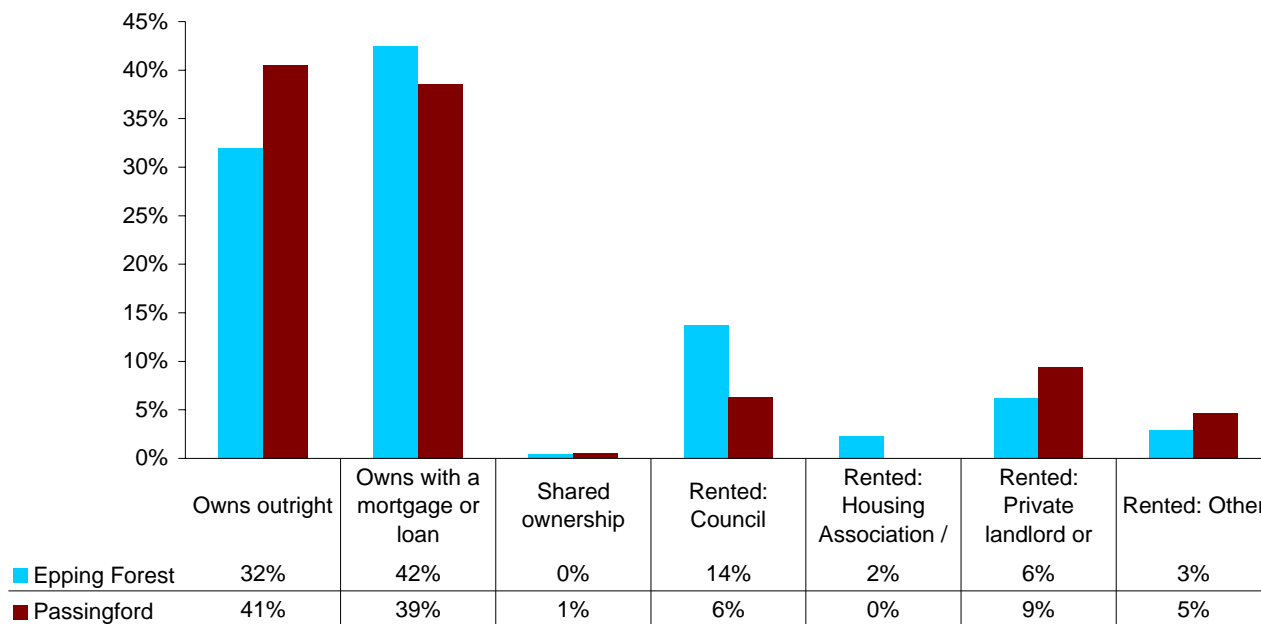
Source: Indices of Deprivation 2007 - Department for Communities and Local Government, 2007

Ward Profile: Passingford

Housing

Tenure data gives a breakdown of all households within the Ward, whether they be owned or rented. If rented, the split between rented from the Council, Housing Association/Registered Social Landlord, Privately rented or Other is given.

Tenure Comparison with Epping Forest District



Source: Office for National Statistics, 2001

A Liability Order is obtained when a resident's Council Tax is not paid. It is similar to a County Court Judgement, and enables the Council to take further recovery action.

Council Tax Liability Orders

	Passingford	EFDC All Ward Average
Non-vacant households who cannot pay their Council Tax	30	45
% of non-vacant households who cannot pay their Council Tax	3.76%	2.87%

Source: Council Tax Office - EFDC, 2009

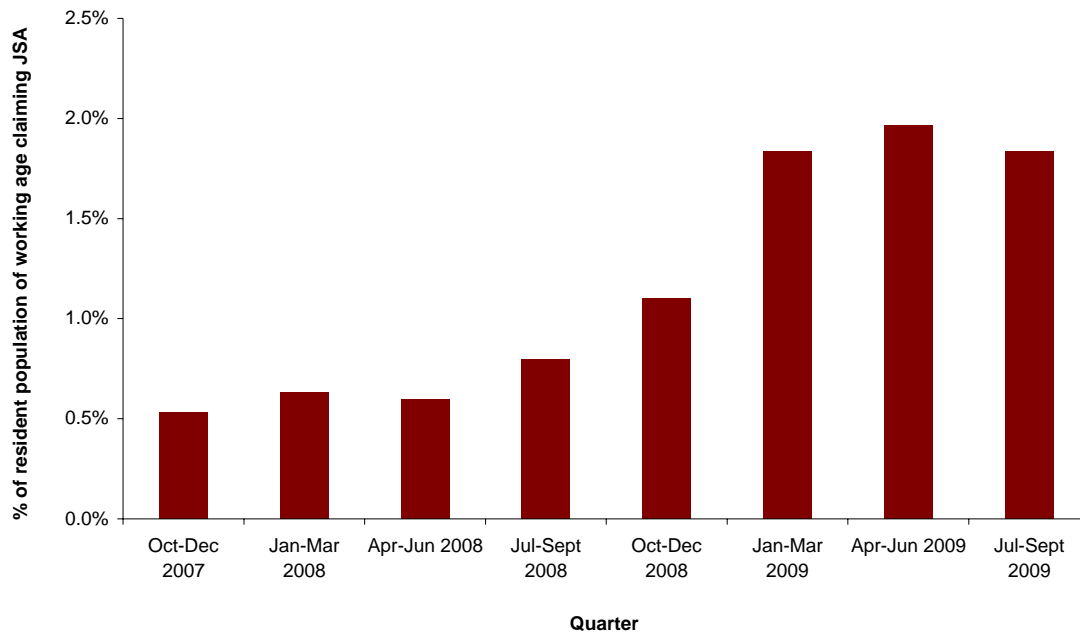
Ward Profile: Passingford

Employment

The Jobseekers Allowance (JSA) claimant count records the number of people claiming JSA and National Insurance credits, at Jobcentre Plus local offices. People claiming JSA must declare that they are out of work, capable of, available for, and actively seeking work during the week in which the claim is made.

The percentage figures express the number of claimants resident in an area as a percentage of the working age population resident in that area. Working age is defined as 16-64 for males and 16-59 for females. Data shown is for the ward area.

Job Seekers Allowance Claimants



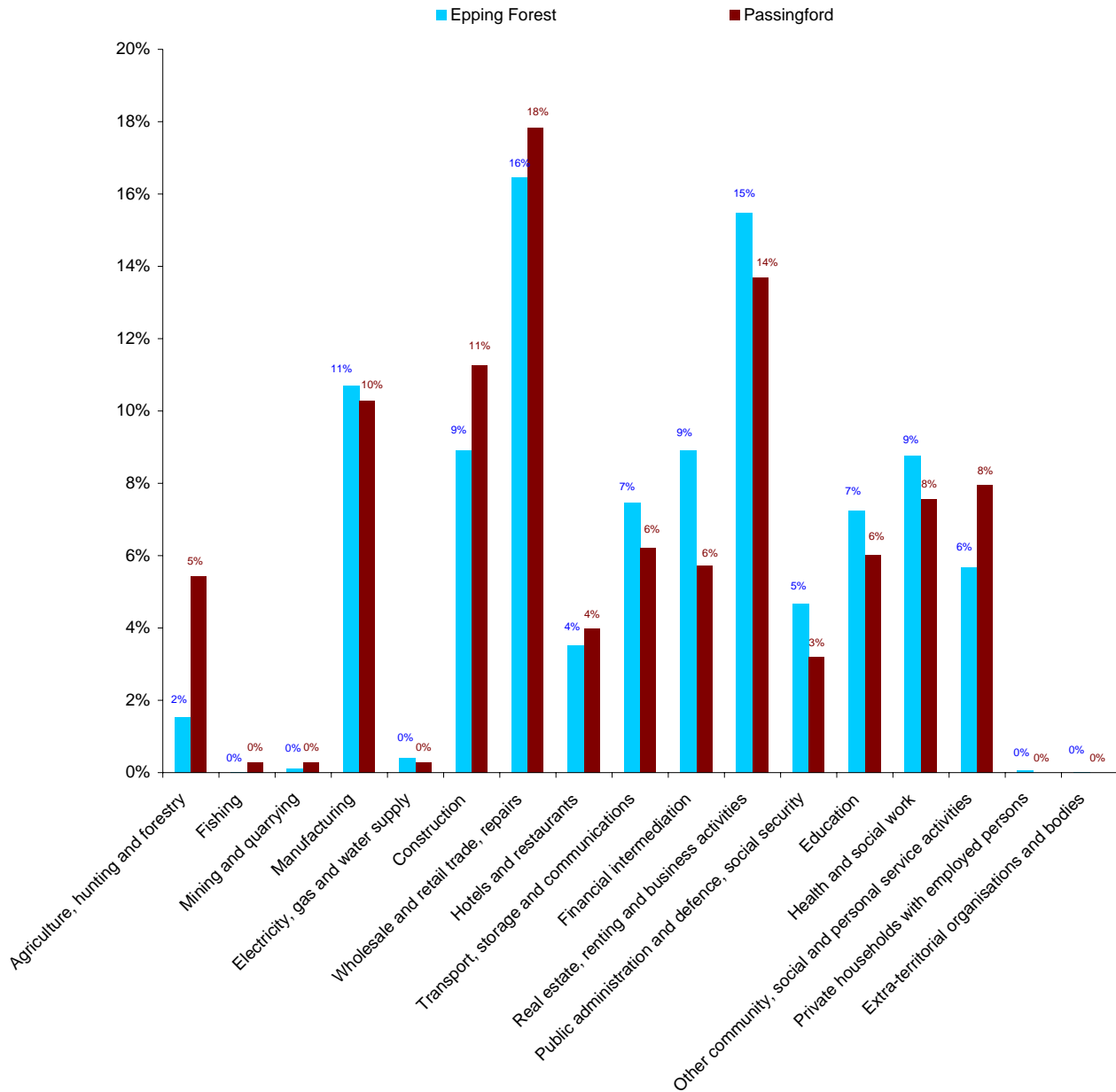
Source: Nomis, 2009

Ward Profile: Passingford

Employment (continued)

Industry of Employment data shows the usual resident population, aged 16 to 74 and in employment, by the industry they work in. Percentage figures are rounded to one decimal place.

Industry of Employment Comparison with Epping Forest District



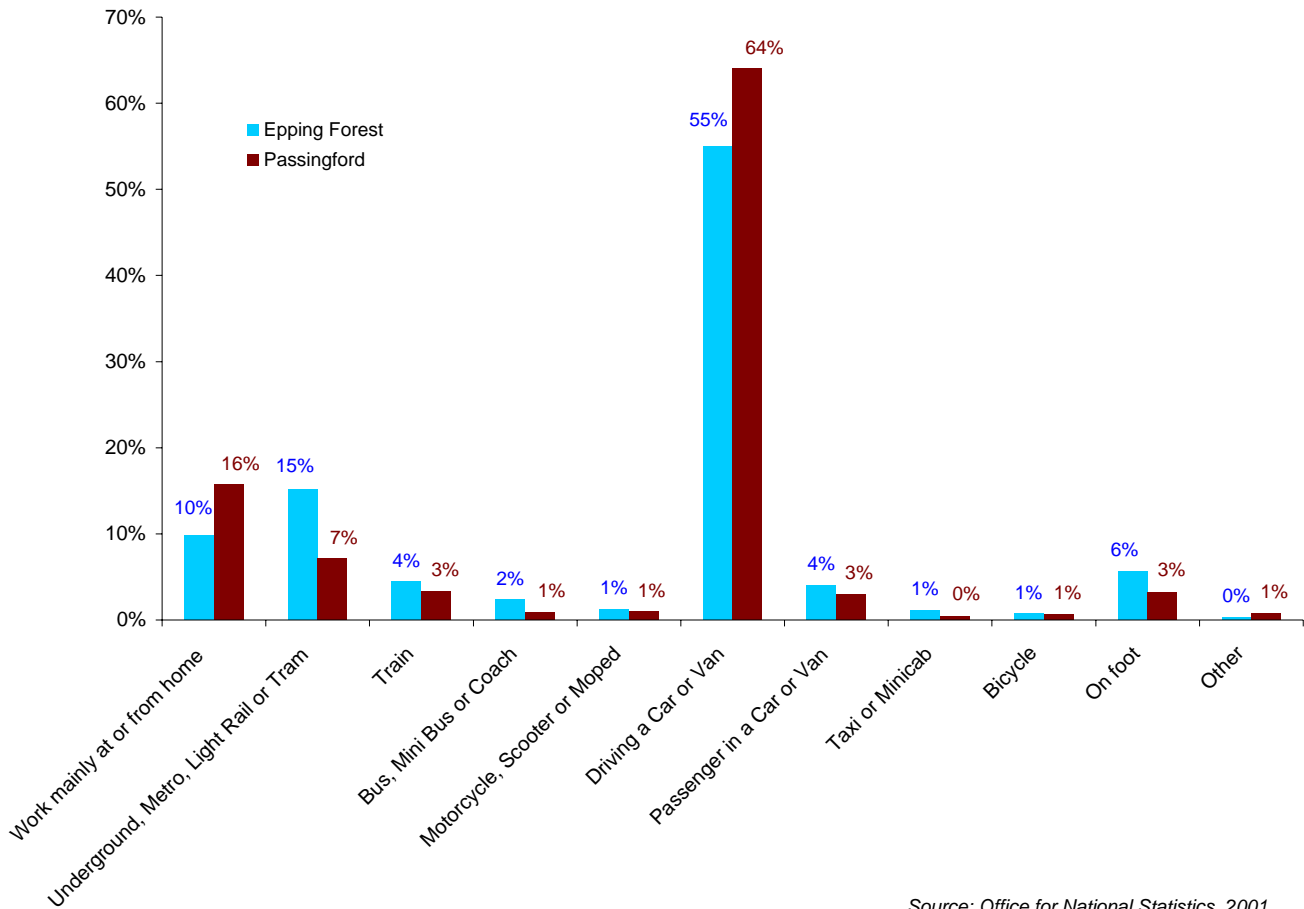
Source: Office for National Statistics, 2001

Ward Profile: Passingford

Transport

Travel to Work data shows all people aged 16 to 74 in employment, by means of travel to work. The means of travel to work is that used for the longest part, by distance, of the usual journey to work. The distance travelled to work is the distance in kilometres, in a straight line, between the residence postcode and workplace postcode. Percentage figures are rounded to one decimal place.

Travel to Work Comparison with Epping Forest District



Source: Office for National Statistics, 2001

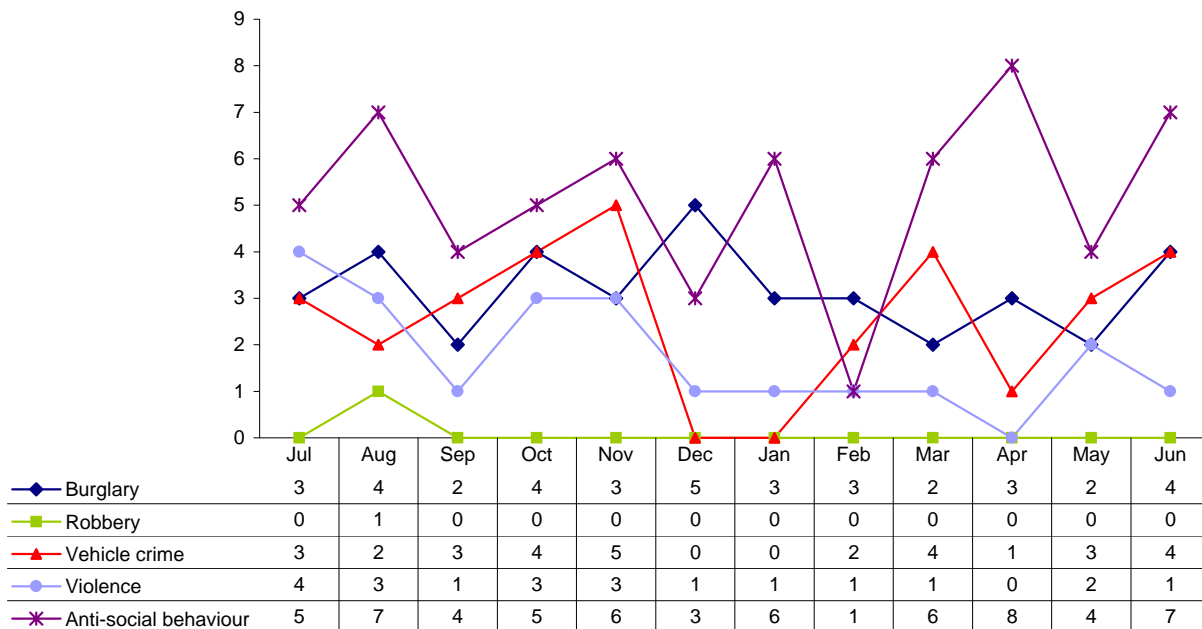
Ward Profile: Passingford

Crime and anti-social behaviour

The crime data shown below is from Essex Crime Mapper, an online resource maintained by Essex Police. Below the graph is a breakdown of which crimes are included within each of the categories.

Please note that the rises and falls of the different types of crimes over time can appear exaggerated - the number of incidents within a Ward is relatively small, so some of the changes appear amplified. The figures underneath the graph show the actual numbers of incidents.

Incidence of Crime (July 2008 - June 2009)



Source: Essex Police Crime Mapper, July 2008 - June 2009

Burglary

This is all recorded burglary offences including domestic dwellings, sheds, outbuildings and commercial properties.

Robbery

This is all recorded robbery offences including robbery from a business premises or a person.

Vehicle Crime

This includes recorded theft of a motor vehicle and theft from a motor vehicle offences.

Violence

This includes all recorded offences involving violence against the person.

Anti-social behaviour

This includes all incidents of anti-social behaviour, not crimes, recorded by the police e.g. youth nuisance, abandoned vehicles and rowdy or inconsiderate behaviour.

Ward Profile: Passingford

Sources and further reading

You may wish to further explore some of the data sources referred to in this Ward Profile via the following web links:

Census data (2001):

The Census incorporates data on many different topics, including population, ethnicity, travel, housing, employment, health and education. While Census data can be considered reliable, figures collected in 2001 are continually becoming outdated. The next Census will take place in 2011, but the actual data arising from it is not likely to be available until at least 2012.

Census data can be viewed by Ward/Parish/District etc. on the Neighbourhood Statistics website:
<http://neighbourhood.statistics.gov.uk>

Census data on larger areas, and many more topics, is available on the National Statistics website:
<http://www.statistics.gov.uk>

Indices of Deprivation:

The most recent (2007) Indices of Deprivation data can be downloaded by local authority on the Communities and Local Government website:
<http://www.communities.gov.uk/communities/neighbourhoodrenewal/deprivation/deprivation07/>

Employment and Economy:

The NOMIS website provides official labour market statistics at many levels. Some of the datasets (including Job Seekers Allowance Claimants) are updated monthly. NOMIS can be found at:
<http://www.nomisweb.co.uk>

Crime and Anti-Social Behaviour:

Latest 'incidence of crime' figures are available via the Essex Crime Mapper. It can be searched by Ward/Village/Postcode etc. Data is updated monthly, but there is a time delay between collection and publication of new data (about 4 months). This tool can be found at:
<http://essex.crimemapper.co.uk>

Greenspace / recreation:

It has not been possible to aggregate information on greenspace, conservation and recreational facilities for this first edition of the ward profile. Detailed information on a parish basis will be available once the Audit of Open Space and Recreation (required by Government under Planning Policy Guidance Note 17) has been completed.

The District Council's Play Strategy, focussing on play provision for children, is available to view here:
http://www.eppingforestdc.gov.uk/local_democracy/Performance/Epping_Forest_Play_Strategy.asp

New Local Plan Maps currently being prepared will show the provision of wildlife sites. Further information on Local Nature reserves within the District is available via Countrycare (the District Council's countryside managements service) at their website: http://www.eppingforestdc.gov.uk/Council_Services/planning/countrycare/default.asp