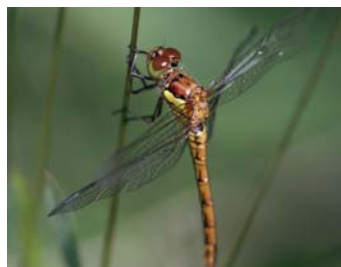


## You are not alone

There are just over 1600 Local Wildlife Sites throughout Essex and this number is growing. These sites have been recognised for a wide range of nationally and regionally important habitats and species. By participating in this project the following applies:

- Recognition of a Local Wildlife Site could assist in attracting grant aid for your land.
- No restrictions are placed on ordinary agricultural operations.
- Landowners/managers control all land management decisions; hopefully in a way sympathetic to wildlife.
- No additional rights of way are created, access is by permission of the landowner/manager only.



## Layer Breton Heath — an important Local Wildlife Site



*“We have been working with a variety of partners including Essex Biodiversity Project, Colchester Borough Council, BTCV and Essex and Suffolk Water for the past seven years to improve Layer Breton Heath, an important local wildlife site.*

*I have greatly appreciated the recent advice from Essex Wildlife Trust regarding grants. The site has also been supported by important financial funding from key supporters such as Essex Biodiversity Project and Natural England.*

*It is important to me that we enhance and maintain this important habitat”.*

Geoff Russell Grant  
Layer Breton Heath Management Committee

### For more information and contact details

Adam Rochester, Wildlife Sites Officer  
Essex Wildlife Trust, Abbots Hall Farm  
Great Wigborough, Essex C05 7RZ

telephone: 01621 862 988  
mobile: 07791 430 250  
email: adamr@essexwt.org.uk

[www.localwildlifesites.org.uk](http://www.localwildlifesites.org.uk)

### Supporters

Essex Wildlife Trust, Essex County Council, Essex Biodiversity Project, Environment Agency, Natural England, Forestry Commission, FWAG, The District and Borough Councils of Tendring, Colchester, Braintree, Uttlesford, Harlow, Epping Forest, Brentwood, Chelmsford, Maldon, Rochford, Castle Point, Basildon, Southend and Thurrock.

# Essex Local Wildlife Sites Project



**ESSEX**  
Wildlife Trust  
Working as part  
of the Essex  
Partnership

## What are Local Wildlife Sites and why are they so important?

Local Wildlife Sites (LoWS) are extremely important areas of land with significant wildlife value. Local Wildlife Sites can support both locally and nationally threatened species and habitats. Many sites will contain habitats and species that are recognised to be important under the UK Biodiversity Action Plan (BAP), which sets out strategies for the conservation of our most vulnerable wildlife.

Local Wildlife Sites, together with statutory protected areas like Sites of Special Scientific Interest (SSSI), are fundamental as they provide a vital contribution in order to maintain the current levels of wildlife in Essex.

*Local Wildlife Sites are fundamental as they provide a vital contribution towards maintaining the current levels of wildlife in Essex.*

## Essex Local Wildlife Sites Project

In partnership with a wide range of organisations (see the last page for list of main supporters) the Essex Wildlife Sites Project seeks to work with landowners/managers to ensure the good work on these important sites continues.



## What are the likely benefits from owning/managing a Local Wildlife Site?

### We can provide:

- Advice on grants that may be available to you and support with your grant applications, eg. Positive Conservation Management Grant (see overleaf), English Woodland Grant Scheme and Environmental Stewardship Scheme.
- Advice is available if needed, on how to manage your site with wildlife in mind.
- Ways to get your site surveyed or re-surveyed for wildlife.
- Background information on your site, including information relating to the main wildlife features.
- Assistance to carry out the essential works on your site or link you with volunteers in the local community.



## What are the funding opportunities available to help me manage a Local Wildlife Site?



- Positive Conservation Management Grant (National Indicator 197). See the Local Area Agreement section.
- Essex County Council initiatives.
- English Woodland Grant Scheme and Ancient Woodland Cluster Scheme.
- Environment Stewardship Scheme (Entry Level and Higher Level Schemes).
- Essex Biodiversity Project.

**For more information and advice call the Local Wildlife Sites Officer – Adam Rochester 01621 862 988 or email [adamr@essexwt.org.uk](mailto:adamr@essexwt.org.uk)**

## The Local Area Agreement

The Local Area Agreement is an overarching agreement that focuses on working towards improving the quality of life throughout Essex and therefore covers a wide range of issues such as healthcare, education and the environment.

The agreement has been made between public, private and voluntary organisations.

To ensure the vision of the agreement is followed through, a set of indicators have been established with their own specific lead officers to ensure the indicators are fully supported.

National Indicator 197 seeks to improve local biodiversity by working with landowners/managers to achieve Positive Conservation Management of Local Wildlife Sites.

To help landowners/managers to achieve Positive Conservation Management for their sites, a grant is now available.



**For more information on National Indicator 197 – Positive Conservation Management Grant, and how to apply, please contact Adam Rochester, Local Wildlife Sites Officer (01621 862 988) or for background information and downloadable forms visit [www.localwildlifesites.org.uk](http://www.localwildlifesites.org.uk)**

## Frequently Asked Questions

---

**Are Local Wildlife Sites related to Sites of Importance for Nature Conservation (SINCs) and County Wildlife Sites (CWS)?**

*These are one and the same, the name has changed over time to become Local Wildlife Sites.*

---

**How do I know that I have a Local Wildlife Site on the land that I manage?**

*Your local council has a list of all the Local Wildlife Sites in your District/Borough. Alternatively you can contact the Wildlife Sites Officer. You will need to provide the address and grid reference.*

---

**If my land does have a Local Wildlife Site on it, am I obligated to manage the land in a certain way?**

*There are no obligations – the landowners have the right to decide whether they wish to get involved with the Project. However, we are really keen to work with you and many owners are very proud of their Local Wildlife Site.*

---

**I have an area of land I believe is important for wildlife but is not recognised as a Local Wildlife Site. How do I get the area formally designated as a Local Wildlife Site?**

*Currently there are a number of routes to get an area of land designated. First action is to contact the Wildlife Sites Officer for more information. New sites have to meet the criteria set out in the Selection Criteria document – this can be downloaded from the Wildlife Sites website [www.localwildlifesites.org.uk](http://www.localwildlifesites.org.uk)*

---

**Are Local Wildlife Sites Protected?**

*Local Wildlife Sites are protected within the local planning system. They are a ‘material consideration’ in the determination of planning applications, and this should ensure that there is a general presumption against development upon them.*



*It should be stressed that notification does not confer any rights of access either for the general public or nature conservation organisations; it is simply recognition of a site’s nature conservation value.*

---