

# 20th Countrycare Annual Report 2005/06

<b>Contents</b>	1
<b>1. Introduction</b>	2
<b>2. Executive Summary</b>	3
2.1 Achievements for 2005/06	3
2.2 Major Projects in 2005/06	3
2.3 Working with Community	3
2.4 Working with young people	4
2.5 Guided Walks, Talks and Events	4
2.6 Projects for 2005/06	4
<b>3. Improving public access to the countryside</b>	5
3.1 Improving the public rights of way network	5
3.2 Improving access to public open space	5
3.3 Project examples	5
<b>4. Improving and protecting biodiversity</b>	6
4.1 Local Nature Reserves and Wildlife Sites	6
4.2 Practical habitat management work	7
<b>5. Community involvement and Education</b>	8
5.1 Community involvement	8
5.1.1 Volunteers	8
5.1.2 Epping Forest District Tree Wardens	8
5.2 Guided Walks and Events	9
5.3 Involving young people	9
5.3.1 Working with schools	9
5.3.1.1 Practical project days	9
5.3.2 Work placement students	9
5.3.3 "Roots programme" 2005/06	9
<b>6. Resources generated</b>	10
6.1 Volunteer resources	10
6.2 Grants and sponsorship	10
6.2.1 Essex Biodiversity Project	10
6.2.2 Essex County Council	10
6.2.3 Forestry Commission	10
6.3 The future 2006/07	10
<b>Appendix 1 Access to the countryside</b>	11
<b>Appendix 2 Caring for the landscape</b>	14
<b>Appendix 3 Volunteer numbers</b>	24
<b>Appendix 4 Local Nature Reserves and EFDC owned sites</b>	25
<b>Appendix 5 Guided Walks</b>	28
<b>Appendix 6 Talks given</b>	28
<b>Appendix 7 Events attended</b>	28
<b>Appendix 8 Schools and Education</b>	29
<b>Appendix 9 Young Countrycare "Roots and Rootlets"</b>	29
<b>Appendix 10 Summary of budget, income and resources</b>	30

## 1. Introduction

Epping Forest Countrycare is Epping Forest District Council's Countryside Management Service. Based within the Forward Planning and Environment Section of Planning Services, Countrycare is fully funded by the District Council and is the key resource for advice, information and practical assistance on countryside and nature conservation issues.

Operating across the whole of the Epping Forest District, Countrycare undertakes a wide variety of community-based activities and coordinates a regular programme of practical conservation work. The ability of Countrycare to engage and involve the local community in "hands on" practical conservation work remains its key strength. As one of the Council's primary "enablers" Countrycare involves people of all ages and abilities in every aspect of its work.

The Service has developed a credible and proven track record for delivering quality projects that in turn has developed strong community support and trust, which staff have been able to harness to good effect. The obvious public enthusiasm and desire of people to make a difference is reflected in Countrycare's ability to recruit and keep a wide volunteer base.

Examples of Countrycare's core activities over the last year include;

- Habitat management and creation – managing 30 sites across the District including ponds, grassland, woodland and hedgerows.
- Access improvements – Work on the public rights of way network and access improvement works to public green spaces.
- Educational activities – work with schools, coordinating the district Tree Warden Scheme, organising guided walks and events.

In 2005/06, Countrycare had between 4 and 5 permanent staff complemented by volunteers, student work placements and seasonal staff.

### The Epping Forest Countrycare staff for 2005/06 were:

Personnel	Role	
Paul Hewitt	Countryside Manager	
Andrew Vaughan	Assistant Countryside Manager	
Zoë Freeman	Assistant Countryside Manager	Returned maternity leave 09/06/05
Jordan Thomas	Countryside Assistant	
Gareth Jones	Trainee Countryside Assistant	Started 02/05/05
Luke McKenzie	Work Placement Student	

The following report highlights Countrycare's key achievements for the financial year 1 April 2005 to 31 March 2006. Detailed overleaf are the major projects undertaken in the course of the year, however fuller descriptions of all the individual projects undertaken are detailed within the appendices. Throughout this report every attempt has been made to avoid jargon and specialist terms where possible, however where used an asterix\* indicates that the term is explained in the glossary of terms in Appendix 2.

## 2. Executive Summary

The Service's principal achievements of 2005/06 can be summarised as follows:

### 2.1 Achievements for 2005/06

Highlights of the year include:

- 1,196 volunteer days given on 121 practical tasks organised this year.
- Organised 45 walks and educational events,
- Work on the District's 9 Local Nature Reserves included 42 project days that involved 3,379 hours of staff and volunteer time.
- Major access project completed at Royal Gunpowder Mills, Waltham Abbey. Funded by a £3,000 grant from Essex County Council's Aggregate Levy Scheme.
- Generating a total income of £22,163 for the Council and other conservation bodies within the district.
- Successfully securing a £24,744 grant from the Local Heritage Initiative that will enable the Council to organise "The 50 Favourite Trees of the Epping Forest District Project" in 2006/07
- Established Countrycare's first trainee post.

### 2.2 Major projects in 2005/06

Once again this year much of the Service's efforts have gone into improving the District's biodiversity with work concentrating on the management of District Council owned sites and those to which Countrycare has had a long term commitment. These included the District's 9 LNRs at which staff and volunteers spent just under 3,400 hours making improvements. Chigwell Row Wood provided a major focus for project work this year with 14 volunteer projects days and 1,075 hours of staff and volunteer time given to the reserve. A full description of this and all other projects can be found in Appendices 1 and 2.

### 2.3 Working with the Community

In 2005/06, Countrycare had a 5th consecutive year in which more than 1,000 volunteer days were given to the service. Staff organised 121 practical days on 58 sites in 20 parishes across the District. In total 1,196 adult volunteer days were given and 726 children were involved in practical conservation work. By using a figure provided by English Nature, the Government's statutory agency for nature conservation, of £6.25 per hour, it is possible to put a financial value on the adult volunteers time of just under £44,850. This figure equates to around a quarter of Countrycare's net expenditure.

As ever a massive thank you goes out to all the dedicated volunteers who have given so much of their time.

## 2.4 Working with young people

Again this year the Service worked with a range of organisations offering practical conservation activities for 11 to 16 year olds. The Service also worked with a range of youth groups and 6 schools from across the District. Over 800 young people were involved in practical conservation work or a Countrycare event.

## 2.5 Guided walks, talks and events.

This year staff organised a total of 21 walks, talks and events aimed at increasing people's knowledge and understanding of the countryside. This included "Birdsong" a major event at Home Mead Local Nature Reserve. A total audience of 546 people attended the 21 events.

## 2.6 Projects for 2006/07

Key objectives include:

Projects	Comments/Objectives
<b>50 Favourite Trees of the Epping Forest District.</b>	In March 2006, a successful application was made to the Heritage Lottery via the Countryside Agency's Local Heritage Initiative to fund a project to celebrate the tree heritage of the District. The project will involve the whole community in nominating their favourite trees - at least 2 from each Parish will be chosen to give a top 50. Projects will include an exhibition, dedicated web site and a tree database. This project should have lasting benefits in that it will establish a web-based database for recording and photographing veteran and landmark trees across the District. This should raise the whole profile of our tree heritage and give useful information to help protect these trees into the future.
<b>Local Nature Reserves.</b>	To work in partnership with Ongar Town Council to secure a new nature reserve within the town beside the Cripsey Brook.  Begin the process of designating Norton Heath Common as a Local Nature Reserve.  Assist with the review of the management agreement for the Roding Valley Meadows LNR
<b>Local Wildlife Site (LWS) Review.</b>	Secure funding to enable a review of the LWS network that was first completed in 1991.
<b>Site Management Plans and management agreements.</b>	To complete reviews of existing plans for Nazeing Triangle LNR, Thornwood Common Flood Meadow LNR and Weald Common LNR. Produce full new plans for Old Shire Lane, Waltham Abbey and Loughton Brook FSR.  Investigate management agreements for All Saints Church, Berners Roding, Epping Green Millennium Garden and Foster Street Burial ground.

### 3. Improving Public Access to the Countryside

(See also Appendix 1)

#### 3.1 Improving the Public Rights of Way Network (PROW)

Whilst still not perfect, things have improved greatly over a majority of the district's public rights of way network since Countrycare was first established back in 1986. Early surveys undertaken by staff at the time showed many parishes had a high percentage of paths that were either difficult to use or in many cases blocked. Often the countryside furniture such as bridges, waymarkers and stiles were in a poor state of repair or simply non-existent. Assisting the Highways Authority in the replacement of this furniture has been Countrycare's contribution to improving this 600km long network.

Over the last 20 years the Service has installed an impressive 333 bridges, 1103 waymarkers and fingerposts and 332 gates and stiles across the public rights of way network. All this was achieved by staff and volunteers at a fraction of the cost compare to contract labour.

This year, we have continued to work closely with the West Essex Ramblers through their monthly volunteer tasks. A total of 28 project days were organised this year by staff that saw improvements to 51 paths across the public rights of way network. This amounted to 384 staff hours and 1375 hours of volunteer time. (£8,593 @£6.25hr)

Full details of works undertaken are given in Appendix 1, but examples of work undertaken this year are highlighted below.

#### 3.2 Improving access to public open space

Since 2000, Countrycare has concentrated much time and effort into getting its own house in order by trying to demonstrate best practice and improve access to countryside sites that the District Council owns. This is very much in line with the current health agenda as people are being encouraged to take more exercise. By making sites more accessible and easy to use hopefully this will happen. The main access project this year was at the Royal Gunpowder Mills in Waltham Abbey (See below)

#### 3.3 Project examples

Location	Comments
Royal Gunpowder Mills, Waltham Abbey	"The Wildlife Walk" Having secured a £3,000 grant from Essex County Council's Aggregate Levy Scheme. Staff and volunteers from the regular Countrycare Group, Planning Services and Capel Manor College spent 5 volunteer days transforming a 500m stretch of pathway. In total 115 staff and 327 volunteer hours were given to complete the project.
Waltham Abbey Parish	Staff and volunteers from the West Essex Ramblers Working Party, the Epping Forest Conservation Volunteers and Capel Manor College spent 4 days improving 3 paths in the parish. Waymarkers, bridges, gates and fingerposts were all installed along with vegetation clearance. In total 36 staff hours and 220 volunteer hours were dedicated to improving the 3 paths in the Parish.

## 4. Improving and protecting biodiversity\*

(See also Appendices 2 and 4)

### 4.1 Local Nature Reserves (LNRs)\* and Local Wildlife Sites\*.

The protection and enhance the District's biodiversity remains one of Countrycare's core objectives and this has become the key focus of our practical management work over recent years. This year the service undertook work on 38 project sites across the district involving the organisation of an impressive 92 practical project days. Over 6,688 hours of staff and volunteer time were given to managing the sites to improve their biodiversity. (£32,600 worth of volunteer time 5,216 hours @ £6.26/hr)

**Local Nature Reserves (LNRs)** The District's 9 LNRs now form the major focus for Countrycare's biodiversity work and this is clearly reflected in the time and resources being put into them. This year alone 3,379 hours of staff and volunteer time went into their improvement.

Most of the LNRs are relatively small, less than 3 hectares, but all are situated close to where people live. They are a great asset for the community and offer areas where people can come into contact with nature right on their doorsteps. All the LNRs are managed with the assistance of local residents. English Nature, soon to become Natural England have recommend there should be 1 hectare of Local Nature Reserve per 1,000 head of population. This District currently has 1 hectare per 1,325 head of population. It is Countrycare's desire to see this network of publicly accessible green space expanded. Another 29.5h of LNR is needed.

**Chigwell Row Wood Local Nature Reserve.** Chigwell Row Wood provided a major focus for project work this year. In all 14 volunteer projects days were organised seeing 255 staff hours, 820 volunteer hours (£5,125 @ £6.25/hr) and 100 contractor hours dedicated to the nature reserve. A range of groups were involved in the management of the site from the regular Countrycare volunteers 'Roots' group through to Writtle and Capel Manor Colleges.

Habitat work ranged from glade creation and pollard restoration through to the first phase of a major heathland restoration project. A grant from the Essex Biodiversity Partnership provided funding for the stripping of 100m<sup>2</sup> of topsoil from an area of the wood adjacent to the existing heathland. It is hoped this will encourage the re-colonisation of heathland plants such as heather, lousewort and petty whin (the seed source coming from the extension of the heath on the Hainault Forest side.)

**Local Wildlife Sites (LWS).** There are 180 designated local wildlife sites across the Epping Forest District, the majority of which are in private ownership. Together they form a vital network of biodiversity across the District effectively "hot spots" from which ultimately wildlife can migrate back out from if land around them is brought into favourable management. Partnership working and influencing landowners of these sites is therefore vital. Once again this year, the Service teamed up with a number of landowners and conservation organisations on a number of sites.

Full details of works undertaken on the LNRs and LWS are given in Appendix 2.

## 4.2 Practical habitat management work.

This year, Countrycare organised 92 practical project days that were dedicated to improving biodiversity on 36 sites in 16 parishes across the district. Of these, 9 sites were LNRs, 4 were sites of special scientific interest\* and 19 were designated Wildlife Sites.

**Woodlands** – With Epping Forest running through the spin of the district there may be a perception that the district is well wooded. In fact only 10% of the land area is woodland and the majority of the woods are relatively small and often isolated within an arable landscape. Connecting these woods and trying to bring back positive management is a key objective.

This year, Countrycare undertook 19 project days in 6 woodlands undertaking management with both volunteers and contractors. A range of projects were undertaken from woodland thinning and coppicing\* through to pollard\* restoration work on individual trees. Of the 6 woods, 4 were semi natural ancient woodland\*. **In total a hectare of woodland was brought back into management.**

**Ponds and Wetlands** - It has been estimated that in the UK a pond has been lost every hour since 1880. This staggering statistic represents a 78% loss and equates to about 1.3 million ponds. This is clearly going to have serious consequences for any species that relies on ponds and wetlands to survive. When you consider all our native amphibians and a third of all British vascular plants (660) are supported by wetlands it is not hard to see why they have fantastic biodiversity value. However, ponds and wetlands do offer a great deal more in terms of their landscape value and the pleasure they give to people. Consequently, each year Countrycare tries to restore at least one pond and this year an old silted up pond on Lock Lane, Roydon was chosen.

In a partnership project between the landowner, Roydon Countrycare, Roydon School and the Council's Land Drainage Section a plan was formed. Contractors began the work by de-silting and reforming the pond and this was followed by volunteers coppicing trees around the pond and "tidying" up the boundary hedgerow. To finish the project a new hedgerow was planted beside Lock Lane from the pond up to the village green. In all 6 project days were organised involving the regular Countrycare volunteer group, Roydon Countrycare volunteers and 45 children from Roydon School. Full details of the project are given in Appendix 2.

**In all Countrycare worked on the management of 4 ponds.**

**Grasslands** – In a District where arable farming has dominated over the last 40 years, grassland has become a very uncommon sight. Rarer still are the irreplaceable unimproved grassland\* sites. These now cover just 0.28% of the District and represent the rarest and most threatened habitat type in Essex. As a consequence, Countrycare has given their management a high priority. Everything possible is being done to try and save this precious biodiversity resource.

This year, 16 grassland sites and 4 mosaic sites (combining grassland and woodland) received management. Of these 12 were unimproved grassland sites. Their sizes ranged from the small special roadside verges through too much bigger sites such as village greens and nature reserves. **The total area of grassland managed was 20.20 hectares**

## **5. Community Involvement, Education and Celebration**

(See also Appendices 3, 5, 6, 7,8 and 9)

### **5.1 Community involvement**

On its conception back in 1986, Countrycare's primary goal was always to engage and involve the community in all aspects of its work. This is just as relevant today as it was then as the Service continues to involve people in "hands on" practical work, walks, talks and events. The Service is also available to offer advice, guidance and encouragement to a whole range of people from small local groups through to farmers and other landowners. Countrycare tries to be as proactive and responsive as possible to local people's needs, views and ideas. By giving people the encouragement and means to help themselves so much more can be achieved. Much of our work is community driven and this will remain so.

Getting old is not always seen as a good thing, but as the Service enters its 20th year Countrycare finds itself in a very strong position. With the passage of time has come a history and an established track record for delivering worthwhile and value for money projects. This has helped Countrycare to develop a good reputation and engender the vital ingredient on many partnership projects, that of trust. Being able to persuade either landowners to allow work on their land, grant funding bodies to give you money or volunteers to give you their free time are of course all crucial ingredients when trying to get a project off the ground. Below are some examples of how the Service works with the local community.

#### **5.1.1 Volunteers**

Last year the Service organised an average of 3 practical volunteer projects a week. As is shown throughout this report a whole spectrum of tasks were undertaken from habitat management work such as hedge planting through to access projects such as building paths and bridges. Volunteers of all ages and abilities were engaged and the results of their efforts are there for all to see. Not only are there benefits to the wider community and wildlife, but also there are obvious benefits to the volunteers themselves taking part in terms of fitness and sense of well-being. As concern continues to grow about the increasing levels of obesity in the UK, the opportunities offered by countryside management is just beginning to be recognised by the health professionals.

There is increasing evidence too coming forward from academic studies that clearly demonstrate contact with nature is good for you. Coupled with physical exercise there are even stronger benefits to people's health and well-being. Countrycare continues to work with a number of volunteers who have or who are suffering with mental health problems and their involvement in an outdoor group task has seen them flourish and their improvement obvious.

In 2005/06, our volunteer was as strong as ever. Over 121 practical days were organised by staff at which 1,196 adult and 576 Children (under 16s) volunteer days were given.

#### **5.1.2 Epping Forest District Tree Wardens**

The Epping Forest Tree Warden Scheme has been running successfully in the district since 1994. Over the past year, Countrycare has coordinated a number of training days and tree wardens have been responsible for helping staff with Parish Tree Strategies, coordinating several tree planting schemes and are also helping Countrycare to start a veteran tree survey for the District.

## 5.2 Guided Walks, Talks and Events

This year a total of 8 walks and events were organised and 13 talks given attracting an audience of 546 people. Themes for the walks ranged from veteran trees through to bats.

**“Birdsong”** - In November 2005 Countrycare in partnership with Epping Forest Arts (the Council’s Arts Team) undertook a major outdoor community event “Birdsong” at Home Mead Local Nature Reserve in Loughton. The aim of the project was to introduce the local community to the reserve and involve them in its production. In the build up to the event three schools were involved. Two classes of children from Thomas Willingale and St John Fisher Primary Schools were taken around the Reserve and helped to create lanterns for the event, collages for the entrance sign and bird boxes to be put up in the reserve. Pupils from Davenants School worked with Epping Forest Arts staff to create a dance performance for the event.

The event itself took the form of a nighttime walk involving story telling, music and dance. The audience were guided around the reserve as it was lit sympathetically with lanterns and spotlights. In all 150 people attended the event and 120 students were involve din the build up.

## 5.3 Involving young people

Working with young people remains one of Countrycare’s priorities. The following are examples of where the Service has been able to offer young people the opportunity to get involved in a practical conservation tasks or an outdoor activity.

### 5.3.1 Working with schools

This year Countrycare worked with 6 schools across the District on a variety of conservation tasks and interpretation projects. Examples of the projects include;

#### 5.3.1.1 Practical Project Days

**West Hatch High School, Chigwell** - Staff worked alongside 13 pupils from the Environment Club within the school to help restore an old pond within the school grounds. Pupils were taught the safe use of tools and the principles of pond management. In total 100 hours of staff and volunteer time were dedicated to the project.

**Loughton, Whitebridge Infant School.** Staff worked with 240 children from the school over 2 days to plant 5 oak trees and a 55m section of hedge on the schools boundary. In all 34 hours of staff time were given to the school. At 3 other schools similar projects were undertaken.

#### 5.3.2 Work placement students

Luke McKenzie spent the last year working 2 days a week with staff whilst studying for his HND in Countryside Management at Writtle College. Our thanks go to Luke for all his hard work.

#### 5.3.3 "Roots" programme 2005/06

"Roots" was established back in 2000, as a joint initiative between Countrycare and the Council's Community Leisure Service. The intention was to give 11 to 16 year olds the opportunity to get involved in practical conservation work and other countryside activities. Last year proved difficult with attendance and just 3 events were run.

## **6. Resources Generated**

(See also Appendix 10)

### **6.1 Volunteer resources**

The massive support, which Countrycare receives for all its practical conservation work, continues to be its most vital. Using a figure provided by English Nature, the Government's statutory agency for nature conservation, it is possible to put a financial value on the time given to the Service. English Nature gives a value of £6.25 per hour for adult volunteer help. Using this figure it has meant Countrycare was able to generate just under £44,850 of volunteer help. This figure equates to over a quarter of Countrycare's net expenditure and when combined with grants and sponsorship for the year this gives a combined notional income of £64,010.

### **6.2 Grants and Sponsorship.**

Again, this year a number of grants and donations were secured to support the work of the Service and generated a total income of £19,163 to the Council. (See below for some examples. Appendix 9 has a full summary breakdown of expenditure and income)

#### **6.2.1 Essex Biodiversity Project.**

Countrycare was awarded two grants totalling £2,620 from the Essex Biodiversity Partnership. This were awarded enabled work to be taken to restore a section of heathland at Chigwell Row Wood LNR and undertake remedial works to native black poplars with the grounds of Waltham Abbey Scout Group.

#### **6.2.2 Essex County Council Aggregate Levy Scheme and Landscape Conservation Grant.**

Two grants were secured by Countrycare this year from Essex County Council. A £3,000 grant was awarded from the Aggregate Levy Scheme and went to the Royal Gunpowder Mills in Waltham Abbey for their "Wildlife Walk Project". A £760 grant was also received for 60% funding of the Countrycare Free Tree Scheme 2005.

#### **6.2.3 Forestry Commission.**

Countrycare was awarded a woodland improvement grant from the Forestry Commission to create a waymarked circular route around Chigwell Row Wood LNR. In total £850 was given to coppice rides and install 70 waymarker posts creating a 1.5km trail.

### **6.3 The Future 2006/07**

From the 2 October 2006, three government agencies - English Nature, the Rural Development Service (Environment activities) and the Countryside Agency (Landscape, Access and Recreation division) will be united in a single body called Natural England. This new agency will have a wide remit including biodiversity, landscape enhancement, access issues, study and enjoyment of the countryside and socio-economic well-being issues. It will be administering grant aid for projects, but it is unsure just what form this will take.

This will have funding implications for Countrycare in the short term at least, as Natural England sorts out its priorities and grant funding. The Service has relied heavily on English Nature and The Countryside Agency for funding in the past securing £64,000 from them in the last 6 years alone. Hopefully, new grant streams will be on line soon and supporting similar projects as the previous agencies did.

## Appendix 1 - Access to the countryside

### Summary

**Public Rights of Way Network** – Worked in 16 Parishes, 28 project days. 51 public rights of way (prow) were improved by installing 54 waymarker posts, 3 fingerposts, 10 footbridges, 2 kissing gates, 5 stiles and 16 rambler pedestrian gates. Cleared 0.65 km of prow. 384 staff hours and 1375 volunteer hours (£8,593 @£6.25hr)

**Non Rights of Way** - Worked in 2 parishes, 7 project days. 163 staff hours and 375 (£2,343 @£6.25/hr)

The following is a list of access projects undertaken by the regular Countrycare Volunteer Group working alongside Countrycare staff. Other groups are mentioned by name.

**Abbess, Beauchamp and Berners Roding, Footpaths 15, 34, 42 and 46.** On footpaths 34, 42 and 46, staff working with pupils from Capel Manor installed a 5m footbridge and 2 waymarker posts. On footpath 15, staff installed a step off a newly installed footbridge by the Church at Abbess Roding. In total 18 staff hours and 72 volunteer hours were dedicated to improving the 4 paths in the parish.

**Bobbingworth, Bridleway 20, Pensions Lane (W87), “Greensted County Walk”.** Staff and volunteers from the West Essex Ramblers Working Party spent the day clearing 150m of encroaching bramble and scrub from this important green lane. In all 12 staff hours and 90 volunteer hours were dedicated to the task.

**Chigwell, Footpath 79, Froghall Lane “Chigwell Country Walk”.** Staff and volunteers from the West Essex Ramblers Working Party spent 2 days clearing 100 metres of the lane from encroaching blackthorn. In total 24 staff hours and 120 volunteer hours were dedicated to the task.

**Epping Upland, Wintry Park Farm, Footpath 34.** Staff and volunteers from the West Essex Ramblers Working Party installed 3 rambler gates on a footpath crossing Wintry Park Farm. In total 6 staff hours and 45 volunteers hours were given to the task.

**High Laver, Footpaths 14, 15, 18, 22 and 25.** Staff and volunteers spent the day installing 13 waymarker posts to improve 5 footpaths around Faggotters Farm. In all 20 staff hours and 78 volunteer hours were given to the task.

**Lambourne, Hainault Forest SSSI, Local Wildlife Site W50 (78.1h).** Beyond the Romford Road from Chigwell Row Wood LNR lies Hainault Forest. In 2004, Countrycare made contact with the Woodland Trust (who manages the Essex County Council owned section of the Forest) and both organisations are now working closely together coordinating volunteer projects and trying to establish a Hainault Forest Volunteer Group. It is intended to establish work parties in both the Forest and Chigwell Row Wood LNR. In the summer, staff and volunteers installed 2 bridges and a section of post and rail fencing. In all over 24 staff hours and 6 volunteer hours were contributed.

**Little Laver, Footpaths 22 and 25.** Staff and volunteers installed 12 steps on a path as it climbs the bank of a new reservoir. In addition, 3 waymarker posts, a fingerpost and new stile step were also installed to improve 2 paths around High Laver Hall. In all 21 staff hours and 99 volunteer hours were given to the task.

**Nazeing, Footpaths 3, 24 and 25.** Staff and volunteers installed a bridge and 6 waymarkers. In all 18 staff hours and 90 volunteer hours were dedicated to improving the 3 paths.

**Ongar, Footpaths 1, 19, 27, 32, 35, 36, and 49.** Staff working with the Countrycare “Roots” volunteers spent the day installing a footbridge and 2 waymarker posts on footpaths 27 and 32. On paths 19, 35, 36 and 49 staff and the regular Countrycare volunteer group installed 2 kissing gates, a rambler gate and repaired a flight of steps. On footpath 1, students from Capel Manor College worked with staff to install 2 footbridges alongside the River Roding on the Essex Way. In total 47 staff hours and 144 volunteer hours were given to improving the 7 paths in the parish.

**Roydon, Footpaths 8, 16, 29, 32, 33, 51, 64 and Bridleway 70.** On footpaths 8, 32 and 33 staff worked with volunteers from the West Essex Ramblers installing 4 rambler gates, 5 waymarker posts and a fingerpost. On bridleway 70, 300m of pathway were cleared and on footpath 29 the handrails of a bridge were replaced. On footpaths 16, 29, 33, 51, 64 and bridleway 70, volunteers from Roydon Countrycare and the Sunday Countrycare volunteer group installed 4 waymarker posts, 4 steps and cleared 300m of encroaching vegetation from beside Blind Lane. Over the 3 days, 46 staff hours and 153 volunteer hours were given to improving the 8 paths in the parish.

**Sheering, Footpaths 26, 29, 30 and 34.** Staff working with volunteers from the West Essex Ramblers spent 2 project days improving 4 paths close to the Pincey Brook east of Ealing Bridge. In total a footbridge, 6 rambler gates and 3 waymarker posts were installed. In all 30 staff hours and 118 volunteer hours were given to improving the 4 footpaths in the parish.

**Stanford Rivers, Footpath 23 and 24.** Staff working with volunteers from the West Essex Ramblers installed 5 stiles and 5 waymarker posts. In all 37 staff hours and 90 volunteer hours were dedicated to the task

**Stapleford Abbots, Footpaths 20, 25 and 33.** Staff working with volunteers from the West Essex Ramblers Working Party spent a day clearing 300m of encroaching vegetation from the 3 paths. In all 8 staff hours and 21 volunteer hours were dedicated to the task.

**Stapleford Tawney, Footpath 12.** Staff working with pupils from Capel Manor installed a 4m bridge, rambler gate and 4 steps to improve this path behind Great Tawney Hall. In all 5 staff hours and 48 volunteer hours were dedicated to the task.

**Stanford Rivers, Bridleways 28 and 29 “Stapleford Country Ride”** Staff working with pupils from Capel Manor installed 3 waymarker posts making improvement to the Stapleford Country Ride. In all 5 staff hours and 24 volunteer hours were given to improving the 2 paths.

**Theydon Bois, Footpath 5 “Theydon Country Walk.”** Staff installed a kissing gate and “rambler” gate on the Theydon circuit. In all 18 staff hours and 6 volunteer hours were given to the task.

**Waltham Abbey, Royal Gunpowder Mills SSSI, Wildlife Site W1. (See Appendix 2 for site details)** Over the years, Countrycare has assisted the Charity with a number of practical access projects and this year Countrycare was asked to see if it could help with a “Wildlife Walk” and “birdhide project.

**“The Wildlife Walk”** From the outset the pathway, which leads visitors from the wildlife tower to the heronry and burning ground, was never completed satisfactorily by contractors. The paths surface was very uneven and unsuitable for either wheelchairs or pushchairs. Repairs were needed so Countrycare applied for a grant from Essex County Council’s Aggregate Levy Scheme on behalf of the RGM. A £3,000 grant was secured which was to fund the resurfacing of the 500m long pathway and production of a guide leaflet.

Work first began in August 2005 on the resurfacing works and this was followed by extra days in October, January and March. In total 100 tonnes of granite dust were laid repairing the 500m of pathway. A total of 5 volunteer days were held involving volunteers from the regular Countrycare Group, Planning Services and Capel Manor College. Some 115 staff and 327 volunteer hours were given to complete the project.

**“Birdhide”** - Staff and students from Capel Manor College spent a day installing 8 steps and a small bridge to a bird hide on the site. In all 24 staff hours and 42 volunteer hours were dedicated to the task.

In total, Countrycare organised 6 project days involving 454 staff and volunteer hours. For more information visit <http://www.royalgunpowdermills.com>

**Waltham Abbey, Bridleway 64, Daws Hill and Footpaths 54 and 90.** Staff and volunteers from the West Essex Ramblers Working Party spent a project day installing a waymarker post on bridleway 64 “Pepper Alley” and vegetation clearance to a number of fingerposts and gates in the area. On a second day the group were joined by staff from Essex County Council’s Parish Paths Partnership Project (P3) and cleared 100m of bramble on footpath 90 “Mott Street”. At Daws Hill, staff and volunteers from the Epping Forest Conservation Volunteers spent the day clearing 50m of path from bramble and scrub from City of London land near Carroll’s Farm. In addition, 3 waymarkers were installed and a stile removed to improve the London Loop section 18. On footpath 54, staff worked with pupils from Capel Manor College to install a 3m footbridge and 2 rambler gates to improve this path off Sergeants Lane.

In total over the 4 days 36 staff hours and 220 volunteer hours were dedicated to improving the 3 paths in the Parish.

**Willingale, Footpaths 5,12,16,17,18,19 and 57.** Staff working with volunteers from the West Essex Ramblers spent a project day improving footpaths 16,17,18 and 19 around Shellow Hall. In total a footbridge and 7 waymarker posts were installed. On footpaths 5, 12 and 57 staff and volunteers installed a further 2 footbridges and a fingerpost. In all 51 staff hours and 84 volunteer hours were given to improving the 5 footpaths in the parish over 3 project days.

## Appendix 2 - Caring for Landscape and Wildlife

Summary	2005/06	2004/05	2003/04	2002/03	2001/02	2000/01
Trees planted	2,976	2,011	2,289	2,971	1,816	2,058
Hedgerow created (m)	825	420	430	645	336	475
Hedgerow managed (m)	145	155	155	175	150	300
Woodland managed (ha)	1	1.1	1	1	1.25	0.6
Grassland managed (ha)	20.20	19.65	15.02	13.29	12.5	12
Ponds managed	4	4	2	4	2	3
Ponds created	0	1	0	0	1	1
Hours worked on LNRs	3,379	2,926	2,712	1,740	1,948	1,012
Project days	92	77	84	78	73	52
Local Wildlife Sites managed	19	20	18	17	15	14
Sites managed	36	36	34	37	32	30

The following lists conservation projects undertaken by the regular Countrycare Volunteer Group working alongside Countrycare staff unless. Other groups are mentioned by name.

**Abbess, Beauchamp and Berners Roding, Berners Roding Church (0.5h).** Situated to the west of Berners Hall (a 16<sup>th</sup> Century part-moated farmhouse) lies a small church, which is accessed via a narrow raised causeway on its southern side. Countrycare has held annual work parties to manage the churchyard since 1995. The only exception was 2004 when there was uncertainty over the church's future. The then owners, COOP Pension Fund had applied for planning permission to convert the church for residential use. However, this application was withdrawn when the farm and church was sold to the Thompson Family Charitable Trust. The Trust has asked Countrycare to continue with the management of the site and a formal agreement is to be signed between the two parties.

In total 4 days were organised involving 61 staff hours and 206 volunteer hours were dedicated to this area. The following work has been undertaken:

- The churchyard and its adjacent grassland was cut (0.32 h).
- 3 days saw the planting of trees in the boundary hedgerows, clearance of bramble and trees from the small paddock to the south of the church, laying and coppicing of the hedge which borders the causeway to the church and cleared several self seeded ash trees within the small churchyard itself.

**Buckhurst Hill, Linder's Field LNR, Local Wildlife Site M19 (3.6 h).** Linder's Field was gifted to the residents of Buckhurst Hill by Charles Linder back in the 1960s. Comprising areas of unimproved grassland, small ponds and an area of ancient woodland the site is widely used by local people and is a haven for wildlife. The site has been managed by Countrycare since 1990 and in 2000 it was declared a Local Nature Reserve by the District Council.

Over the last year, 6 volunteer days have been organised involving the regular Countrycare volunteer group, the "Roots" volunteers and the 4<sup>th</sup> Epping Elm Cub pack. A total of 82.5 staff hours, 273 hours of volunteer time and 10 hours of contractor time were given to the LNR. The following was undertaken:

- Half of the grassland was cut (0.7h). Scrub was cut on the northern field boundary beside the "old" garden and the footpath that runs through it. Contractors felled 2 Oak trees in Pluckett's Wood and volunteers cleared blackthorn and bramble. Woodland area managed 0.1h
- A new 30m section of hedgerow was planted beside the fence on the LNRs eastern boundary.
- The main pond was cleared of excess pond vegetation.
- Repair of 30m of pathway in the woodland and clearance of bramble and thorn bushes around the Powell Road entrance.
- Repaired viewing platform beside pond.

**Buckhurst Hill, Roding Valley Recreation Ground.** Working with Buckhurst Hill Parish Council and Buckhurst Hill Primary School a new 50m section of hedgerow was planted on the Roding Valley Recreation Ground. All the trees were supplied by the Free Tree Scheme. In all 19 staff hours and 30 children from the school were involved.

**Chigwell, Chigwell Row Wood LNR, Local Wildlife Site W41. (15.6h).** As a remnant of Hainault Forest, this valuable ancient woodland contains a variety of habitats and is especially important for its numerous veteran trees and relic heathland. Since 1949, the land has been managed as Charitable Trust by various Councils and today is managed by Epping Forest District Council.

Over the last year the wood has again been a major focus for Countrycare. Staff have worked with both the regular Countrycare volunteer group and students from Capel Manor and Writtle Colleges. In total staff organised 14 volunteer projects days giving a total of 255 staff hours, 820 volunteer hours and 100 contractor hours dedicated to the nature reserve. This equates to £5,125 @£6.25/hr of volunteer time. The following works were undertaken this year:

- Completed the waymarking of the woodland trail with the installation of 33 waymarkers posts.
- Replaced kissing gate and installed new fencing on the 1<sup>st</sup> entrance Brockett Way.
- Installed a metal bollard to prevent motorbike access beside main gateway onto recreation ground
- Heathland - Major works were undertaken to this area including the felling of numerous trees on the edge. In addition contractors spent 2 days stripping topsoil from the heathland area (100m<sup>2</sup>) to encourage the re-colonisation of plants like heather and lousewort. Petty Whin seed was also sown from seed retrieved from the extension of the heath on the Hainault Forest side.
- Many of the main rides were cleared of encroaching bramble and holly to encourage the establishment of grass margins.
- Coppicing of Hornbeam was undertaken in several compartments and major clearance of holly saw the creation of several new woodland glades. 0.5h of woodland was brought back into management.

**Chigwell, West Hatch Secondary School Pond.** Staff worked with 13 pupils from the school to restore an old existing pond within the school grounds. Work involved the removal of several willow trees which had fallen across the pond. These trees were beginning to totally dry out the pond and were making it very dark and uninviting. In all 18 staff hours and 84 volunteer hours were given to improving the pond.

**Chigwell, Roding Valley Meadows LNR, Luscious Mead and Great Horseley Meadow, Local Wildlife Site G10 (SSSI) (56.5 h).** The Roding Valley Meadows are jointly owned by Epping Forest District Council and the Grange Farm Trust. Since their declaration in 1986 as an LNR the meadows have been managed by the Essex Wildlife Trust.

In April 2005, for a fourth year, Countrycare volunteers assisted Essex Wildlife Trust Warden, Paul Cook with the cutting of 0.38 hectares of Great Horseley Meadow a fenland area. In June, Paul Cook left EWT and Countrycare assisted with the coordination of several volunteer days until a new warden, Patrick Bailly was appointed. In August and September 2005, 3 project days were spent removing scrub from the field edge and repairing fencing on the reserve ready for the arrival of the cattle in October. A total of 48 hours of staff time and 222 hours of volunteer time were spent on the reserve over the 4 days.

**Epping, Swaines Green, Local Wildlife Site G40. (9.64 h)** Located to the north west of Epping Town, Swaines Green is a diverse site with ancient hedgerows enclosing areas of developing woodland, scrub, and grassland. From 1994, the site was managed by Countrycare on behalf of Epping Town Council and local residents under a management and access agreement with the landowner. Finally, in the summer of 2005, after 7 years of negotiations the land was secured and bought by the City of London and Epping Town Council with help from the Heritage Lottery Fund and The Friends of Swaines Green.

Throughout the year Countrycare continued to organised projects with both the regular Countrycare Volunteers, the Friends of Swaines Green and St John's School. This saw 58 staff hours and 388 hours of volunteer time dedicated to the site over 6 project days. The following work was all undertaken:

Forties Field (City of London land)

- Clearance of bramble and hawthorn at the main entrance from the recreation ground.
- Improvements to the entrance from recreation ground with the laying of hogging on the bridge and pathway.
- Coppicing hawthorn trees to create scalloped bays beside the paths that run parallel with the southern boundary near the recreation ground and along the northern boundary with Bolt Cellar Lane.

Middle Lincoln's Field and Lincoln's Field (City of London land)

- Haycutting of the fields was undertaken (1.5h).

**Epping Upland, All Saints Churchyard, Local Wildlife Site G14. (0.8h)** Countrycare has managed the conservation area of this churchyard for the past 12 years working in partnership with the churchwardens. To date over 138 different flowering plants have been recorded within the churchyard's conservation area. To help maintain the diversity of wildflowers, especially the impressive display of Cowslips in the spring, the grass is cut annually and all the arisings removed. In June 2005, 18 hours of staff time and 96 hours of volunteer time were dedicated to this important wildlife site.

**Epping Upland, Epping Green Millennium Wildlife Garden. (0.5h)** In 1999, Epping Upland Parish Council received a £1,500 grant from the Millennium Festival Awards for All Scheme. This went to create a Millennium Wildlife Area on redundant allotments within Epping Green village. Over the last 6 years, Countrycare and volunteers have created a small pond, hedgerows and a wildflower meadow. In August 2005, an annual hay cut of the grassland (0.37h) was undertaken to encourage the development of the seeded wildflower meadow. In all 12 staff hours and 72 volunteer hours were dedicated to the project.

**Lambourne, Lambourne End Outdoor Centre.** This wonderful outdoor centre is tucked away on the very south eastern tip of the District and borders Hainault Forest. It is run by Aston-Mansfield one of the oldest charities in East London dating back to 1884. As a not for profit organisation, and registered charity the centre gives young people the chance to get involved in a whole range of team building activities, outdoor pursuits, practical work and arts and crafts activities. The centre has recently had a £1.2 million refurbishment to the residential accommodation and its training facilities mainly through a £900,000 grant from the Community Fund (Big Lottery). As well as great facilities for outdoor activities the site also has a small working farm. The site itself has altered little in the last 500 years and consequently consists of a series of small fields bounded by ancient hedgerows with many significant veteran trees.

Countrycare were approached by the Centre to offer advice with management of the hedgerows and old trees. Consequently, a number of volunteer days were planned involving the regular volunteers and the "Roots" group.

Between December 2005 and March 2006, 4 volunteer projects were organised involving 87 staff hours and 283 volunteer hours were organised and the following work undertaken:

- Coppicing 50m of hedgerow
- Planting 640 trees to create a new 160m stretch of hedge.
- Erected 30m of post and wire fencing.

**Loughton, Whitebridge Infant School.** Staff worked with 240 children from the school over 2 days to plant a 55m section of hedge on the schools boundary and 5 oak trees. In all 34 hours of staff time were given to the school. The Free Tree Scheme supplied all trees.

**Loughton, Loughton Brook Flood Meadow, Epping Forest Local Wildlife Site M7, SSSI. (0.6h)**

Loughton Brook Flood Alleviation Scheme was created back in 1995, in a joint initiative between the then National Rivers Authority and the District Council. The land itself is still dedicated Epping Forest land and a Site of Special Scientific Interest. Countrycare in partnership with the Council's Land Drainage section and the City of London Keepers help to manage the nature conservation elements of site management. In the summer, staff and volunteers undertook the annual hay cut on the reservoir embankments, which is now starting to establish some good spring flowers. In all 44 hours of staff time and 53 hours of volunteer time were dedicated to the task.

**Loughton, Home Mead LNR, Candidate Local Wildlife Site. (1.82h)** This District Council owned site was declared a Local Nature Reserve in December 2004. Consisting of a mosaic of scrub, secondary woodland and acid grassland a circular hardened pathway was installed around the site in the summer of 2004.

This year, 6 project days were held on the nature reserve involving volunteers from the regular Countrycare group and students from Capel Manor College. In all 103 staff hours and 357 hours of volunteer time was given undertaking the following work;

- Re-profiled the pond by better shelving near the edge and introducing marginal pond plants.
- Coppiced an area of Hawthorn scrub on the northern boundary and formed a dead hedge along the boundary with New Oak Lodge. Coppiced 5 large Hawthorn trees beside pond in compartment 3
- Cut the grassland areas within the LNR (0.5h) and installed a dog bin.

**Loughton, Thomas Willingale School.** Staff worked with 60 children from the school to plant 120 trees creating a 30 metre length of hedge on the school boundary. The Free Tree Scheme supplied all trees. In all 21 staff hours and 6 hours of volunteer time were given to the school

**Matching, Matching Green Local Wildlife Site G30. (4.9 hectares)** Matching Green is one of the largest surviving village greens in Essex, it is also a designated Local Wildlife Site. Surveys in 1998 and 1999 discovered over 170 species of plant including Burnet Saxifrage, Lady's Smock and Common Restharrow. Since 1999, Countrycare has managed the green sympathetically for its wildflowers in partnership with the owners, Matching Parish Council. Annually, contractors undertake a hay cut of the green (3.5 h).

**Matching, New Way Lane, Local Wildlife Site G21.** This special roadside verge is over 500 metres in length. It supports a number of plants that are now very rare in Essex including the "wrongly" named Common Rock Rose. For a number of years the management of the lane has been poor and the diversity has suffered. In September 2005, Countrycare staff decided to try and make a difference and staff and volunteers spent a project day clearing encroaching scrub, cutting and removing grass from the verge to help lower the enrichment of the verge and increase the wildflowers. This would not have been possible without the help of local farmer Richard Morgan who greatly assisted with disposal of the debris. In all 21 staff hours and 75 volunteer hours were dedicated to the site.

**Matching, Jubilee Field.** This is a partnership project between Countrycare, the Council's Sports Development Section and the owners Matching Parish Council. Following consultation with local residents the District Council is helping the Parish to improve its small play area and recreation ground "Jubilee Field". Grant funding has been acquired for major play equipment and Countrycare has agreed to help improve the landscaping with new pathways, hedges, trees and a wildflower area.

This winter, 2 project days were organised by staff and work got underway clearing an area of blackthorn, tidying up rubbish and planting a new 40m section of hedge. In total 24 staff hours and 76 volunteer hours and 4 children were involved in the project.

**Nazeing, Nazeing Triangle LNR, Local Wildlife Site M5 (0.6h)** This important local wildlife site was declared a Local Nature Reserve in June 2001 and is managed in partnership with the owners Nazeing Parish Council. The sites small ponds and wetland support a wealth of wildlife with dragonflies, amphibians and reptiles all represented. However, the site is probably most notable for its large population of great crested newts. Work on the LNR this year included 2 volunteer days at which 18 staff hours and 75 hours of volunteer time were dedicated to the LNR. The following work was undertaken:

- Cutting the main grassland areas
- Coppicing several old hawthorn stools on the eastern boundary bank
- Repaired hardened pathway by removal of encroaching grass.

**Nazeing, Copy Wood Field, Local Wildlife Site M9. (0.7 hectare)** Countrycare has managed this unimproved meadow since 1986. Situated on the northern edge of Nazeing Common this small field is in fact part of the Copped Hall Estate. It is especially notable for its spring flowers and butterflies and forms part of the Epping Long Green Local Wildlife Site Complex. Once again, this year, staff, assisted by volunteers carried out the annual hay cut of the field in July. A total of 36 staff hours and 96 volunteer hours were dedicated to this important wildlife site.

**Nazeing, Nazeing County Primary School.** Staff worked with 237 pupils from the school to plant a new 30m hedgerow at the front of the school. The project involved 27 staff hours.

**North Weald Bassett, St Andrew's Churchyard, Local Wildlife Site G42 (0.8h).** In 1998, this species rich churchyard was designated a Local Wildlife Site by the Essex Wildlife Trust. For a thirteenth year Countrycare organised the annual hay cut of the churchyards conservation area. This year, all management work was undertaken by the West Essex Probation Service.

**North Weald Bassett, Thornwood Flood Meadow LNR Candidate Local Wildlife Site (2.7h).** Thornwood Flood Meadow was the fourth flood alleviation scheme to be created by the District Council and was completed in 1998. Since October 2002, the whole site has been managed under DEFRA's Countryside Stewardship Scheme where it is managed for both flood defence and wildlife.

In a remarkably short period of time the site has developed into a wonderful wildlife habitat with a fine array of wildflowers, butterflies, birds and dragonflies present. This success was reflected in its designation as a Local Nature Reserve in December 2004. This year, staff organised 5 project days at which 78 staff hours and 390 volunteer hours were dedicated to the LNR. The following was undertaken:

- Tree weeding the establishing hedgerows.
- Repairing the banks of the stream with hazel faggots.
- Erecting fencing and safety signs as part of the H&S review of the site.
- Installed a bench, entrance sign and notice board.
- Hay cut grassland area behind Teasel Mead.
- Coppicing trees in planted block behind main bund. Approximately a 1/3 cut in clumps.
- Planting 40 hawthorn trees to gap up the southern boundary hedgerow.
- Felling Ash tree and clearing blackthorn and bramble beside the brook on northern boundary.
- Coppicing a 4m strip of trees planted in block on northern boundary behind Teasel Mead.

**North Weald Bassett, Thornwood Common Nature Area (0.2 hectares)** In 1996, Countrycare and North Weald Parish Council created a nature area on a number of redundant allotment plots paid for by a grant from Rural Action. Since then Countrycare has managed the grassland areas by cutting and scrub clearance that helps to maintain the colony of Bee Orchids and other wildflowers. This year staff and volunteers undertook the annual hay and installed a new bench. In total 12 staff hours and 84 volunteer hours of were dedicated to the site.

**North Weald Bassett, Church Lane Flood Meadow LNR, Local Wildlife Site G41. (3.25 h)** Created in 1989, this flood storage reservoir was designed to protect the village of North Weald from flooding. Some seventeen years on and the site is now extremely important wildlife site.

Over 2,350 trees have now been planted and the meadow has over 180 flowers and grass recorded. Notable flowers include Ragged Robin, Common Spotted Orchid, Bee Orchid, Devil's Bit Scabious and Marsh Cinquefoil. There are good populations of dragonfly and butterfly as well as frogs and toads. Since 1992 the whole site has been managed under Countryside Stewardship. This was renewed for a further 10 years in 2002, enabling a range of habitat management projects to be undertaken including hedgerow management. This year, 3 project days were organised involving 42 staff hours and 270 volunteer hours. The following work was undertaken:

- Coppicing a ⅓ of the Willow from around the main pond – eastern side.
- Coppiced all willow beneath the outfall structure.
- Planting 360 trees to create 90 metres of hedge on the western boundary of the LNR.
- Coppicing a ⅓ of the trees on the outside of the northern bund.
- Laying of 95m of hedge on the sites southern boundary.
- Clearance of overhanging trees along the length of the North Weald Brook.
- Clearance of a large patch of bramble on the northern bund.

**North Weald Bassett, Roughtalley's Wood LNR, Wildlife Site W58 (3.4h).** Comprising areas of both ancient and secondary woodland, the site supports a wide variety of plants and animals including interesting woodland and grassland flora as well as reptiles like Grass Snake and Slow Worm. Over the year, 2 project days were organised involving 30 staff hours and 147 volunteer hours. The following was undertaken:

- Annual cut of the important grassland areas and in orchid area in Norway House (0.2h).
- Coppicing ash, willow and poplar beside main pathway and the brook.
- Felling 12 silver birch trees and thinned regenerating hornbeam in the old wood.
- Area managed 0.25 h

In addition 45 contractor hours were given to undertaking the following;

- Making safe 2 mature oak trees creating “monoliths”
- Removing a mature Poplar from beside the small pond
- Coppicing willow and poplar beside main pathway and making safe several silver birch trees

**North Weald Bassett, Weald Common Flood Meadow LNR (2.9 h - candidate WS).** Since their creation in 1996, these council owned flood storage reservoirs, have been managed jointly by Countrycare and the Senior Engineer based in Environmental Services. In a relatively short time frame they have improved rapidly in nature conservation terms. The grassland already supports a healthy population of flowers such as Cowslip and Ragged Robin and in addition, animals such as Common Lizard, Grass Snake and the Common Frog have also been recorded there. In 2002, the site was entered into Countryside Stewardship. This will fund both annual maintenance of the site plus projects such as hedgelaying and tree planting. In March 2006, staff worked with students from Capel Manor on the planting of 50 metre of boundary hedgerow. In the entire task involved 12 staff hours and 78 volunteer hours.

**Roydon, Lock Lane Pond.** In November 2000, Roydon resident Ruth Martin completed a survey of all the ponds in the parish of Roydon. A total of 46 ponds were recorded, but many were in various stages of succession or decline. As ponds are almost all exclusively a man made feature they all require some form of management without which they simply silt up and fill in.

As a result of the survey, several ponds were chosen for further assessment with a view to possible restoration or enhancement. The ponds were assessed on their potential wildlife benefits, their landscape value and public enjoyment or access. The pond on Lock Lane scored well on all three counts and so was chosen for some restoration work.

The precise origins of the pond are unclear, but it is shown on the 1843 1<sup>st</sup> edition OS Map and is therefore at least 150 years old. It's most likely origin appears to be as an ornamental pond, as there are still signs of ornate railings around its boundary. The pond has been untouched in decades and consequently is almost totally silted up and drying up in the summer.

The project was a partnership between Countrycare, the landowner, Roydon Countrycare, Roydon Primary School and EFDC's Land Drainage Section based in Environmental Services. Pearl Land Drainage started the project in mid November with the de-silting of the pond. This was followed up by volunteers coppicing trees around the pond, "tidying" up the boundary hedgerow and planting a brand new 180m long hedgerow beside Lock Lane. The project involved the regular Countrycare volunteer group, Roydon Countrycare volunteers and children from Roydon School. In all over 6 project days, 36 contractor hours, 60 staff hours, 120 volunteer hours and 45 children days were given to the task.

**Roydon, World's End, Local Wildlife Site W112. (4.6 h)** World's End is a hazel and willow carr woodland notable for a number of native black poplars (*Populus nigra*). One of these fine trees was listed as one of the 50 Great British Trees by the Tree Council to mark the Queens Jubilee. Since 1995, Countrycare has worked in partnership with the landowner (a local farmer) and Roydon Countrycare to undertake a programme of coppice management. This has seen huge improvements to the woodland that was designated as a local wildlife site by the Essex Wildlife Trust in May 1996.

This year, a project day was held in the wood with the re-coppicing of 7 hazel trees in compartment 1a, involving 3 staff hours and 6 volunteer hours.

**Stapleford Tawney, Hawksmere Springs Nature Reserve, Local Wildlife Site M13 (1.7 ha)** This small reserve is owned and managed by the Essex Wildlife Trust. Comprising unimproved pasture, marsh and a fragment of ancient damp woodland, the reserve is extremely rich in flowers. In the meadows a range of uncommon flowers grow including cowslip, betony, ragged robin and yellow rattle while in the wood bluebells and ramsoms carpet the floor in spring.

For a second year, Countrycare staff and volunteers helped EWT Warden Paul Cook with a hay cut of the meadow using small pedestrian mowers (0.5h). In total 18 staff hours and 60 volunteer hours were given to the nature reserve.

**Theydon Bois, Great Gregories Farm, Buffer Lands Epping Forest.** For a fourth consecutive year, Countrycare joined forces with the City of London in a community tree planting day to mark National Tree Week. Work again focused on planting hedgerows below Great Gregories Farm on land owned by the City of London. Over a project day staff from both organisations worked with 90 pupils from Theydon Bois County Primary School to plant a new 100m section of hedgerow. In total 42 staff hours and 28 volunteer hours were dedicated to the project.

**Theydon Garnon, Gernon Bushes Nature Reserve, SSSI, Local Wildlife Site M7. (31.99 h)** Gernon Bushes is notable for its numerous veteran hornbeam pollards, wet springs and bogs. Owned and managed by the Essex Wildlife Trust, Countrycare has, over the last 11 years, worked closely on a whole range of access and habitat improvement projects with the volunteer warden Brian McGhie.

In the autumn of 2005, staff and volunteers assisted with clearance of holly beside a pathway in the secondary woodland and erected 30m of post and rail fencing to restrict illegal bike access. In all 18 staff hours and 108 volunteer hours were dedicated to the site.

**Waltham Abbey, Old Shire Lane. (0.8 hectares).** Countrycare has managed this District Council owned site since October 2000. Formally an old nursery, it was given to the Council as a ransom strip when the Swallow Hotel was built. For Countrycare staff and volunteers the site has become the focus of a major habitat creation project. In 2001, a small pond was created and the over 800 trees have also been planted creating a copse and boundary hedgerows. A wildflower meadow sown in Spring 2004 is now also starting to establish well. In all 20 staff hours and 165 volunteer hours were given to this developing nature reserve and the following tasks were undertaken:

- The Essex Probation Service has undertaken regular cuts of the developing meadow and weeded the trees in the copse.
- In October 2005, Countrycare volunteers built a hibernaculum for reptiles and amphibians. Removed all the reed mace from the pond, coppiced willow on the site's central ditch and planted 30 trees to gap up planted hedgerows. Repaired the pond liner from rabbit/deer damage.
- In January 2006, staff worked with students from Capel Manor College to lay a 20m section of the southern boundary hedge.

**Waltham Abbey, Scout Hut "Elphwood"** The scout hut and its small grounds occupies a strip of land, which borders the Cornmill Stream next to the River Lee. In 2005, 6 male Black Poplars were identified in the small woodland when one sick tree had to be felled. It soon became obvious the other Black Poplars on the site would benefit from some work on or around them if they were to survive in the long term. Countrycare therefore applied to the Essex Biodiversity Partnership (EBP) on behalf of the scouts for grant aid. This application was successful with the EBP offering a grant of £1500 for 2 days work by a team of tree surgeons. In January 2006, works were undertaken to maintain the other 5 native male black poplars of the group, which included "haloing" the trees by removing suppressing Sycamores that had established around them and reducing one tree that was in poor condition. It is hoped the works will now let in major light to the trees encouraging them to bush out and send out side branches. Countrycare will continue to work with the Scouts and monitor the trees.

**Waltham Abbey, Royal Gunpowder Mills SSSI, Local Wildlife Site W1 (34h).** This special site was involved in the production and development of explosives for over 300 years. The site itself is a complex mixture of unique buildings, structures, woodlands, ponds and watercourses all of which give an insight into the site's past history and management. Closed by the MOD in 1991, the site was opened to public for the first time in May 2001, following the establishment of a charitable foundation. With large financial backing from the Heritage Lottery Fund and the MOD many of the unique buildings were restored and large-scale decontamination of the site was undertaken.

However, the site is not only important for its archaeology as it also contains a 34h Alder Woodland. Unique to the District, a vast array of wildlife can be found there including otter, kingfisher, grass snake, 5 species of bat, and the hobby to name but a few. The site also boasts Essex's largest heronry with 36 successful breeding pairs and the primary reason for its designation as a SSSI\*.

In autumn 2005, Countrycare assisted with a tree planting project to mark the 200<sup>th</sup> anniversary of the Battle of Trafalgar. Staff worked with 9 pupils from Waltham Holy Cross Infants School to plant 11 Oak trees in the shape of an anchor. In all 25 staff hours and 6 volunteer hours were given.

**Waltham Abbey, Fernhills, Local Wildlife Site M19.** In this project Countrycare joined forces with the Epping Forest Conservation Volunteers to work on Epping Forest land at Fernhills in Sewardstone, The combined groups undertook 2 projects involving the removal of invading hawthorn scrub, which has begun to takeover this important grassland site. In all 24 staff hours and 168 volunteer hours were dedicated to the task.

**Willingale, St Christopher's & St Andrew's Churchyard, Local Wildlife Site G44 (0.05h).** In 1998, the Essex Wildlife Trust designated this churchyard as a Local Wildlife Site. To date over 100 wildflowers have been recorded including Burnet saxifrage and Cowslip. For the 7th year Countrycare staff undertook a hay cut of the conservation area. In total 12 staff hours were dedicated to cutting 0.05h of the churchyard.

## **Free Tree Scheme 2005/06**

This year 11 schemes were supported across 8 parishes in the District enabling the planting of 2210 trees. In addition, Countrycare gave advice and support to several parish councils, landowners and amenity groups, which enabled the planting of a further 766. All the schemes listed below were grant aided by Essex County Council's Landscape Conservation Grant by 60% (£759).

### **FTS 1 – Theydon Bois Allotments, Theydon Bois.**

100 trees were given to the allotment society to gap up 30m of existing hedgerow.

### **FTS 2 - Roding Road, Loughton.**

Loughton Town Council received 240 trees to create a new 60m hedgerow in the Roding Valley Park.

### **FTS 3 - Whitebridge Infants School, Loughton.**

The school received 140 trees to create a 55m section of hedge on the schools boundary.

### **FTS 4 - Lock Lane, Roydon**

Roydon Countycare received 720 trees to create a new 180m stretch of hedgerow beside Lock Lane.

### **FTS 5 - Linder's Field LNR, Buckhurst Hill**

120 trees were planted to create a 30 m boundary hedgerow.

### **FTS 6 - All Saints Church, Berners Roding**

140 trees were planted to create 35 m hedge on the boundary of the churchyard.

### **FTS 7 - Jubilee Field, Matching**

Matching Parish Council received 120 trees to create a 30m boundary hedge.

### **FTS 8 - Thomas Willingale School, Loughton.**

120 trees were planted by pupils from the school to create a new 30m boundary hedge within the school grounds.

### **FTS 9 - Nazeing Primary School, Nazeing.**

120 trees were planted by pupils from the school to create a new 30m hedgerow at the front of the school.

### **FTS10 - Berwick Farm. Abbess Roding.**

200 trees were provided to the farm to create a new 50m hedge.

### **FTS 11 - Lambourne End Centre, Lambourne.**

320 trees were given to the centre to create a new 80m hedgerow on the farm.

## Glossary of terms used.

**Biodiversity** is short for 'biological diversity'. It describes the whole variety of life on Earth and includes all the world's animals, plants and the natural systems in which they live.

**Sites of Special Scientific Interest (SSSI)** represent the UK's best sites for wildlife and geology. Over half, by area, are internationally important and many play an important part in local culture and economies. Notification as a SSSI is primarily a legal mechanism to protect sites that are of particular conservation interest because of the wildlife they support, or because of the geological features that are found there.

**Local Nature Reserves (LNRs)** are for both people and wildlife. They are intended to be places that can be enjoyed and where people can have contact with nature. They can also be places where people can study and learn about nature.

**Local Wildlife Sites** are "a discrete area of land which is considered to be of significance for its wildlife features in at least a District/Borough/ Unitary Authority context". LWS were identified and declared by the Essex Wildlife Trust following a phase one-habitat survey of the District in 1991 (revised 1996 and 1998). Formerly known as Sites of Importance for Nature Conservation (SINCs), County Wildlife Sites and Wildlife Sites. The Epping Forest District has 181 Wildlife Sites. That breaks down into 118 Woodlands, 39 grasslands, 19 mosaic sites and 5 fresh water aquatic.

**Nationally Notable** is a species that occurs within the range of 16 to 100 modern 10km grid squares across the UK.

**The red data book (Rdb)** lists species whose continued existence is threatened. Rdb species are classified into different categories of perceived risk. Each Rdb usually deals with a specific group of animals or plants (e. reptiles, insects, mosses). They are now being published in many different countries.

**Ancient semi-natural woodland** is woodland that is known to have existed before 1600 and Secondary Woodland is woodland that has developed on land which at sometime has not been wooded.

**Coppicing** is the process of cutting a tree near ground level and allowing it to regenerate from the stool. Trees, which are regularly coppiced, also have a distinctive shape - a large stool close to ground level with a great many shoots.

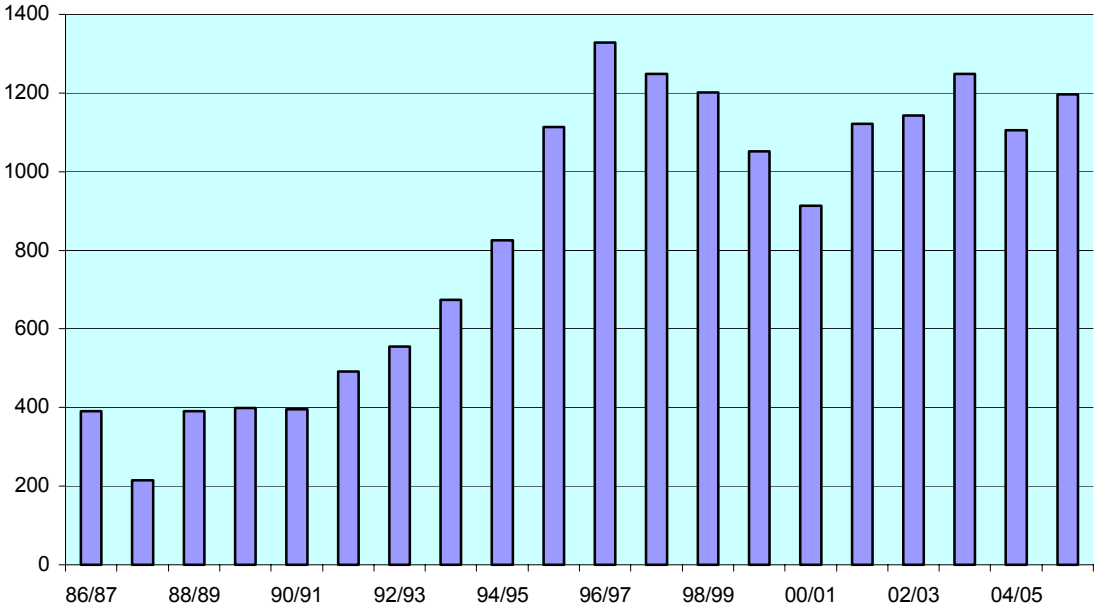
**Habitat** is a place where a plant or animal lives.

**A Pollard** is a tree that has been cut once or has had regular cutting at a height above which grazing animals can reach normally between 2 and 4 metres. Pollards are characterised by its distinctive shape - a large trunk (or bole) from which commonly radiate numerous smaller branches.

**Veteran trees** are of interest biologically, culturally or aesthetically because of its age, size or condition. As a rule, a tree that is either over 250 years old or has a diameter of over 3 metres at breast height can be described as a veteran. However, other factors must be considered such as the location and past management of the tree.

**Unimproved grassland** is grassland that is species rich and has not had chemical fertilisers, herbicides or pesticides applied to it.

# Appendix 3 – Volunteer Attendance 1986 to 2006



## Appendix 4 – Local Nature Reserves, Local Wildlife Sites and EFDC owned countryside sites

Under the National Parks and Access to the Countryside Act 1949, the District Council has the power to designate sites of nature conservation interest as statutory Local Nature Reserves. The Epping Forest District now has 9 Local Nature Reserves including:

**Roughtalley's Wood LNR, North Weald Bassett (3,4 hectares).** This EFDC owned LNR has two distinct areas - semi natural ancient woodland (1.1h) comprising hornbeam coppice with oak standards and planted broadleaved woodland and interesting grassland areas (2.3h).

**Access:** Entrance off Pike Way. A 600m circular hardened walkway allows easy access for everyone.

**Parking:** Street parking along Pike Way.

**Grid Reference:** TL 489 037

**Getting There:** Off Epping Road (B181) between Epping and North Weald Bassett.

**Special plants and animals:** Broad-leaved helleborine, bee orchid, common spotted orchid, veteran hornbeam coppice, slow worm and grass snake.

**Wildlife Site:** Yes, W58

**LNR Declaration:** 17 August 2000

**Chigwell Row Wood LNR, Chigwell (15.6 hectares).** This LNR is managed in Trust by the District Council. A remnant of Hainault Forest this valuable ancient woodland contains a variety of habitats but is especially important for its relict heathland and ancient trees that includes over 50 veteran Oaks and hundreds of Hornbeam pollards.

**Access:** A 370 metre hardened walkway runs north-south through the wood linking up a the nearby recreation ground promoting safe and easy access for everyone. There is also a whole network of woodland rides throughout the reserve.

**Parking:** Lodge Close car park.

**Grid Reference:** TQ 460 931

**Getting There:** Off Lambourne Road (B173) past junction with Romford Road (A112).

**Special plants and animals:** Veteran trees, dead wood insects and grass snake.

**Wildlife Site:** Yes, W41

**LNR Declaration:** 17 August 2000

**Nazeing Triangle LNR, Nazeing (0.6 hectares).** This LNR is managed by the District Council in partnership with the owners Nazeing Parish Council. Although the site is small, it contains a mosaic of ponds and wetland that supports a wealth of wildlife.

**Access:** A hardened granite footpath and boardwalk take you right to the centre of the site.

**Parking:** Street parking along Betts Lane.

**Grid Reference:** TL 414 065

**Getting There:** Off Nazeing Common Road.

**Special plants and animals:** Great crested newt, emperor dragonfly and grass snake.

**Wildlife Site:** Yes, M5

**LNR Declaration:** 12 June 2001

**Linder's Field LNR, Buckhurst Hill (3.6 hectares).** This LNR is managed in trust by EFDC. Half of the LNR comprises of unimproved grassland, scrub with 2 small ponds, while the other half is a semi-natural ancient woodland, Little Pluckett's Wood.

**Access:** By hardened footpath off Roebuck Lane

**Parking:** Street parking Roebuck Lane.

**Grid Reference:** TQ 415 945

**Getting There:** Roebuck Lane is off Loughton High Road (A121).

**Special plants and animals:** Wild service trees, wood anemone, bluebell, sneezewort, frogs and toads.

**Wildlife Site:** Yes, M19

**LNR Declaration:** 17 August 2000

**Church Lane Flood Meadow LNR, North Weald Bassett.** Completed in 1989, this LNR has been the focus of a major engineering and habitat creation scheme. Designed primarily for flood protection, the site can hold 35 million litres of water in a flood event. A wet meadow and large stream fed pond lie within the flood bowl and 2,000 trees have been planted. In addition to the good populations of birds, dragonfly and butterfly over 180 species of flowers, grasses and trees have been recorded.

**Reserve area:** 3.4 Hectares.

**Access:** The site can only be accessed via public footpaths. The pathways are informal grass paths.

**Parking:** Street parking Vicarage Lane at St Andrews Church.

**Grid Reference:** TL 495 047

**Getting There:** Church Lane is off Epping Road (B181).

**Special plants and animals:** Devils-bit scabious, ragged robin, kingfisher, heron and water vole.

**Wildlife site?** Yes G41

**LNR Declaration:** 13 May 2002

**Home Mead LNR, Loughton.** This LNR contains a mosaic of woodland, scrub, acid grassland and a small pond. The woodland has developed over the last 30 years, having spread by natural regeneration into the once open grassland areas. There is still an area of heather on the eastern side of the site, which possibly gives a clue to the once larger heathland community that existed. Areas of scrub now form an interface between the open grassland areas and the woodland.

**Reserve area:** 1.8 Hectares.

**Access:** A circular hardened pathway takes you through the site. Entrance England's Lane, Loughton.

**Parking:** Street parking.

**Grid Reference:** TQ 439 978

**Getting There:** From A121 Goldings Hill via Clays Lane.

**Special plants and animals:** Heather and bird population.

**Wildlife site?** No

**LNR Declaration:** 23 December 2004

**Roding Valley Meadows LNR, Chigwell.** Managed as a partnership between Epping Forest District Council, the Grange Farm Trust and the Essex Wildlife Trust, this beautiful site is a mosaic of hedgerows and open meadows. Situated on the flood plain of the River Roding, these cattle grazed meadows are now the largest surviving area of traditional river valley grassland in Essex.

**Reserve area:** 56.5 Hectares.

**Access:** The site has a network of hardened pathways totalling about 1km. There are also many other pathways across the site.

**Parking:** Car Park, Roding Lane, Chigwell.

**Grid Reference:** TQ 430 942

**Getting There:** Off Roding Lane (B170) between Loughton and Chigwell, next to David Lloyd Centre.

**Special plants and animals:** Numerous plants, Kingfisher and Water vole.

**Wildlife site?** Yes, G10

**LNR Declaration:** 13 April 1986

**Thornwood Flood Meadow LNR, North Weald Bassett.** This EFDC owned LNR was created in 1998 from an arable field, the site can already boast a great wet meadow with specially designed wetland scrapes ideal for wading birds. The meadow is at it best in early summer, when wildflowers such as Ragged Robin, Oxeye Daisy and Knapweed transform the site with colour.

**Reserve area:** 2.7 Hectares.

**Access:** The reserve is reached via a public footpath from North Weald High Road, Thornwood.

**Parking:** Street parking

**Grid Reference:** TL 471 045

**Getting There:** Off (B1393) High Road, Thornwood Common.

**Special plants and animals:** Ragged Robin and Snipe

**Wildlife site:** No

**LNR Declaration:** 23 December 2004

**Weald Common Flood Meadows LNR.** Created in 1996, this EFDC owned flood alleviation scheme has quickly established into a fantastic wildlife site. In spring, Cowslips cover much of the meadow and in early summer Ragged Robin takes over. Grass snake or even a common lizard may be seen basking in a sunny spot. Over 2,000 trees have been planted creating over half a kilometre of new hedgerows.

**Reserve area:** 2.9 Hectares.

**Access:** The reserve is reached via Weald Common Open space.

**Parking:** By Village hall.

**Grid References:** TL 499 039 and TL 502 042

**Getting There:** Off (B181) High Road, North Weald.

**Special plants and animals:** Grass Snake, Common Lizard, Ragged Robin.

**Wildlife site:** No

**LNR Declaration:** 23 December 2004

## Summary

### 9 Local Nature Reserves

	Parish	Area (h)	Declared
Roding Valley Meadows*	Chigwell	56.5	13/04/1986
Roughtalley's Wood	North Weald	3.40	17/08/2000
Linder's Field**	Buckhurst Hill	3.60	17/08/2000
Chigwell Row Wood**	Chigwell	15.60	17/08/2000
Nazeing Triangle***	Nazeing	0.60	12/06/2001
Church Lane Flood Meadow	North Weald	3.25	13/05/2002
Weald Common Flood Meadows	North Weald	3.25	23/12/2004
Thornwood Common Flood Meadow	North Weald	2.70	23/12/2004
Home Mead	Loughton	1.82	23/12/2004
	<b>Total</b>	<b>90.02</b>	

### 4 EFDC owned sites

	Parish	Area (h)
Civic Offices Newt Pond	Epping	0.07
Old Shire Lane	Waltham Abbey	0.80
Norton Heath Common	High Ongar	4.30
Loughton Brook FSR****	Loughton	1.00

\* Managed by the Essex Wildlife Trust. \*\* Managed by EFDC as trustees of a charitable trust.

\*\*\* Managed by Countrycare in partnership with the owners Nazeing Parish Council

\*\*\*\* Managed by Countrycare, but land part of Epping Forest SSSI, Corporation of London.

## 12 EFDC Special Roadside Verges

No.	N.G.R	Side	Length (m)	Road Locality
1	506102-512103	N	600	U New Way Lane, Matching
2	513129-515128	E	250	U Sheering Lodge, Sheering
3	576101-578104	W	300	B184 Beauchamp Roding
4	573097-574099	E	300	B184 Beauchamp Roding
5	490013-493016	NW	550	U Mount End, Theydon Mount
6	435995-439995	S	400	B172 Oak Hill, Epping Forest
7	435995-439995	N	400	B172 Oak Hill, Epping Forest
8	432994-432994	S	50	B172 Jacks Hill, Epping Forest
9	419994-420994	N/S	300	B172 Woodreddon Hill, Epping Forest
10	412971-418965	E/W	900	U Earls Path, Epping Forest
11	428004-431004	S	300	U Upshire Road, Epping Forest
12	574076-574076	N	50	U Birds Green, Fyfield

## Appendix 5 - Guided Walks

Date	Audience and Subject	Attendance
24/04	Public/Epping Forest Tree Wardens, "Woodland management" Balls Wood Nature Reserve, Hertford Heath	15
15/05	Epping Forest Tree Wardens, "Veteran Tree and Hedgerow surveying" Lambourne.	09
26/05	Countrycare Volunteers, "Annual tour of project sites"	17
17/08	Epping Forest Tree Wardens, "Veteran Tree Surveying", Lambourne.	05
15/09	Public/Epping Forest Tree Wardens, "Bats of Hainault Forest" Lambourne.	10
16/10	Public/Epping Forest Tree Wardens, "Deer management", Royal Gunpowder Mills, Waltham Abbey	12
30/10	Public/Tree Wardens, "Fungal Foray", Chigwell Row Wood LNR	19
13/11	Public Event "Birdsong" Lantern Walk, Home Mead LNR, Loughton. In partnership with Epping Forest Arts.	150
<b>8 walks total</b>		<b>237</b>

## Appendix 6 - Talks given

Date	Audience and Subject	Attendance
05/04	Epping Forest Tree Wardens, Open meeting, Waltham Abbey Museum.	13
20/04	Countrycare Liaison Group Meeting, Epping.	18
05/07	Epping Forest Tree Wardens, Open meeting, Epping.	06
28/09	Friends of Swaines Green AGM, "The story so far...", Epping	30
05/10	Loughton Woman's Institute, Loughton "A year in the life of Countrycare"	40
12/10	Countrycare Liaison Group Meeting, Theydon Bois.	18
01/11	Epping Forest Tree Wardens, Quarterly Open Meeting, Civic Offices, Epping	08
15/11	West Essex Ramblers Adopters Meeting, Epping	25
23/11	West Essex Ramblers AGM, Theydon Bois Village Hall. "Countrycare"	45
06/02	Epping Forest Tree Wardens, Quarterly Open Meeting, Civic Offices, Epping	06
14/02	Little Hallingbury Women's Institute, "A year with Countrycare"	35
17/02	North Weald Bassett & District Rural Preservation Soc, North Weald "A year with Countrycare"	30
22/02	Theydon Bois Men's Forum, Theydon Bois "A year with Countrycare"	35
<b>13 talks total</b>		<b>309</b>

## Appendix 7 – Events attended

18/09	Chigwell Row Community Action Group Open Day, Chigwell Row Wood LNR, Chigwell
07/10	Epping Forest Local Strategic Partnership AGM
11/10	15 <sup>th</sup> Anniversary National Tree Warden's AGM, House of Commons
22/10	Regional Tree Warden Forum, Chelmsford
25/11	UK Black Poplar Conservation Group AGM, Aylesbury

Special thanks to the following people who assisted Countrycare with this year's walks and events programme;

Peter & Dorothy Comber, Tree Wardens	Simon Leatherdale, Forestry Commission
Geoff Sinclair, Woodland Trust	Royal Gunpowder Mills, Waltham Abbey
Chris Neilan, Landscape Officer	Staff at Epping Forest Arts.
Thomas Willingale School, Loughton	St John Fisher Primary School, Loughton

## Appendix 8 – Schools and Education

Date	Audience and Subject	Attendance
04/04	West Hatch High School, Chigwell, "Practical Day" – Pond restoration	13
18/05	1 <sup>st</sup> Buckhurst Hill Guides Group, "Planning for real", Linder's Field LNR	18
17/06	Loughton Brownies, "Walk about", Linder's Field LNR	12
28/06	Nazeing Brownies, Nazeing Scout Hut, Nazeing "Pond Dipping"	17
05/08	Ongar Fun Activity Week, "Mapping Adventure", Ongar/Greensted.	17
03/10	Thomas Willingale School, Birdsong Project, Home Mead LNR, Loughton. "Site Visits" In partnership with Epping Forest Arts.	53
10/10	Thomas Willingale School, Birdsong Project, Home Mead LNR, Loughton "Bird box making" In partnership with Epping Forest Arts.	26
12/10	Thomas Willingale School, Birdsong Project, Home Mead LNR, Loughton "Making bird collages" In partnership with Epping Forest Arts.	26
31/10	St John Fisher Primary School, Birdsong Project, Home Mead LNR. "Lantern making workshop" In partnership with Epping Forest Arts.	26
13/11	Davenants School, Birdsong Event, Home Mead LNR	20
16/01	Nazeing County Primary School, Nazeing. "Practical Day – Tree planting in the school grounds.	237
03/02	Buckhurst Hill Primary School "Practical Day" Tree planting day on Roding Valley Recreation ground	30
07/02	Whitebridge Infants School, Loughton "Practical Day – Tree planting in the school grounds.	120
08/02	Whitebridge Infants School, Loughton "Practical Day – Tree planting in the school grounds.	120
24/02	Thomas Willingale School, Loughton "Practical Day – Tree planting in the school grounds.	60
<b>Total</b>		<b>795</b>

## Appendix 9 - Young Countrycare "Roots and Rootlets".

(Projects for 5 - 16 year olds in partnership with EFDC's Community Leisure.)

Date	Event	Attendance
13/04	"Roots" Bridge building day – Ongar Parish	02
12/08	"Rootlets" Insect Safari, Linder's Field LNR, Buckhurst Hill.	17
25/10	"Fungi is Fun", Roots, Chigwell Row Wood LNR, Chigwell	03
28/10	"Fungi is Fun", Rootlets, Chigwell Row Wood LNR, Chigwell	12
14/02	"Tree planting and hedgerows" Lambourne End Outdoor Centre	03
<b>Total</b>		<b>37</b>

## Appendix 10 - Summary of Budget, Income and Resources

2004/05			2005/06	
Budget	Actual		Budget	Actual
		<b>Expenditure</b>		
3,050	2,205	Printing & Photocopying	3,050	3,736
17,600	20,569	Minor Works & Equipment	24,730	27,042
6,910	6,910	Planning & Environment Group	6,040	6,040
178,230	181,400	Countrycare Group Recharges	177,200	169,150
6,410	6,410	Community & Culture Recharges	6,520	6,520
880	876	Managerial & Professional	860	863
<b>213,080</b>	<b>218,371</b>	<b>Total Expenditure</b>	<b>218,400</b>	<b>213,351</b>
		<b>Income</b>		
		Grants, General Reimbursements &		
13,120	14,441	Contributions	16,930	15,349
150	39	Country Walk Leaflet Packs	50	3,814
<b>13,270</b>	<b>14,480</b>	<b>Total Income</b>	<b>16,980</b>	<b>19,163</b>
<b>199,810</b>	<b>203,891</b>	<b>Net Expenditure</b>	<b>201,420</b>	<b>194,188</b>